

Giant Australian Cuttlefish

(*Sepia apama*)

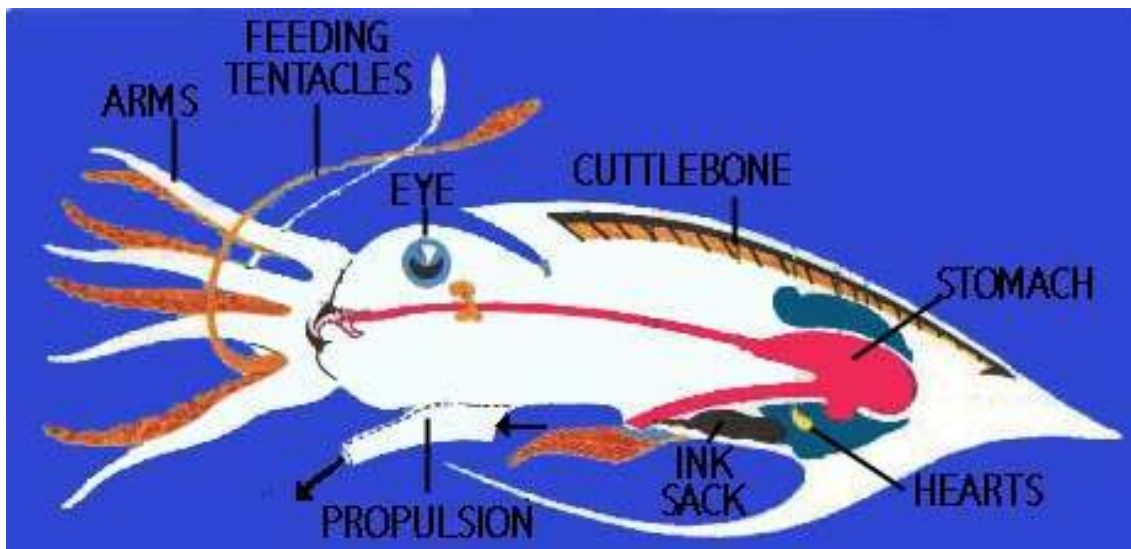


The Giant Australian Cuttlefish (*Sepia apama*) is found in waters from less than a metre deep to probably around 100 m off Southern and eastern Australia.

It is a solitary creature. It is one of the biggest cuttlefish in the world and it can grow up to 1 metre and up to 3 kg.

It has a big flat broad head with two large eyes with eight tentacles (arms) and two extendable feeding tentacles emerging from its head. Along their sides they have thin fins. It breathes like fish through gills.

Internally they have a spongy chalklike internal shell (cuttlebone) which gives the body its shape. The cuttlefish has three hearts, which pump blue blood.



Cuttlefish have the ability to change their colour to match their background. They can also eject ink from an ink sack just like an octopus to confuse and disorientate enemies so it can escape.

They use their 2 extendable feeding tentacles to snatch their catch (fish, prawns, crabs and other crustaceans).