

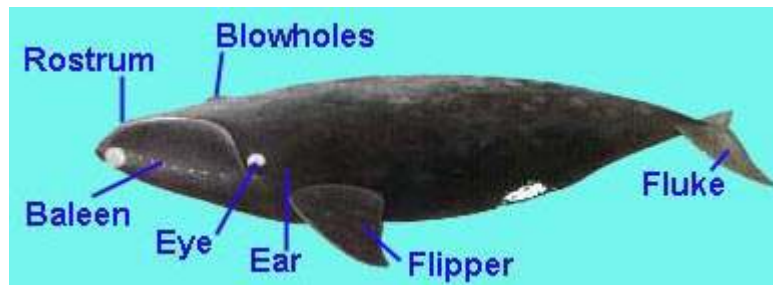
# ***SOUTHERN RIGHT WHALE***

**The Southern right whale is a whale found around the southern shores of Australia.**

**It is a mammal and it breathes air. Southern Right Whales are also sometimes known as a Black Right Whale or as the Pacific Right Whale.**

**The right whale is a huge creature measuring around 15 to 17 meters long and weighing up to 100 metric tons.**

**Their colouring is mainly black (occasionally brown) with a white patch found on their belly. They have a large head. They have no dorsal fin but long wide flippers and wide notched tail flukes.**



**They live over 50 years.**

**Southern right whales are slow swimmers.**

**They have 2 blow holes which produce a wide V shape spout of water vapour.**

**The Southern Right swims along and filters large mouthfuls of water to capture and swallow plankton-copepods (microscopic sea creature). They swallow over 2 tonnes a day ! They can spend over 1/2 their day feeding.**

**The right whale migrates from its summer eating grounds near Antarctica to their breeding grounds of the southern continent like Australia, South America and Africa in Winter.**

