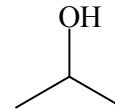
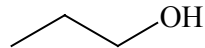
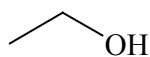
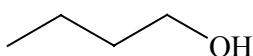


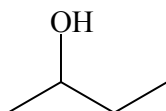
$\text{CH}_3\text{-OH}$	$\text{CH}_3\text{-CH}_2\text{-OH}$	$\text{CH}_3\text{-CH}_2\text{-CH}_2\text{-OH}$	$\begin{array}{c} \text{OH} \\   \\ \text{CH}_3\text{-CH-CH}_3 \end{array}$
Metanol Alcohol metílico	Etanol Alcohol Eílico	1-Propanol Alc. <i>n</i> -propílico	2-Propanol Alc. isopropílico



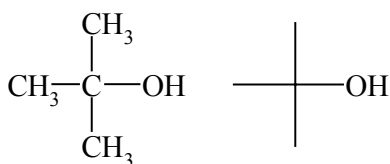
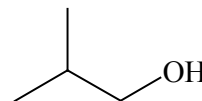
$\text{CH}_3\text{-CH}_2\text{-CH}_2\text{-CH}_2\text{-OH}$   
1-Butanol  
Alc. *n*-butílico  
*n*-Butanol



$\begin{array}{c} \text{OH} \\ | \\ \text{CH}_3\text{-CH-CH}_2\text{-CH}_3 \end{array}$   
2-Butanol  
Alc. *sec*-butílico  
*sec*-Butanol

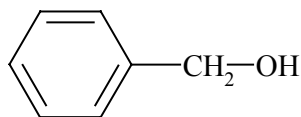


$\begin{array}{c} \text{CH}_3 \\ | \\ \text{CH}_3\text{-CH-CH}_2\text{-OH} \end{array}$   
2-Metil-1-propanol  
Alc. isobutílico  
Isobutanol

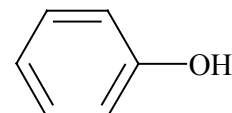


2-Metil-2-propanol  
Alc. *terc*-butílico  
*terc*-Butanol

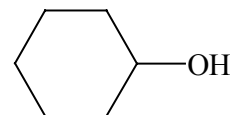
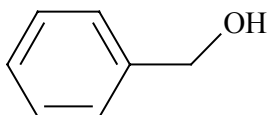
*t*-Bu-OH  
 $\text{Me}_3\text{C-OH}$



Fenilmetanol  
Alc. bencílico

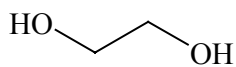
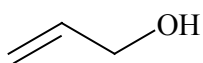


Fenol

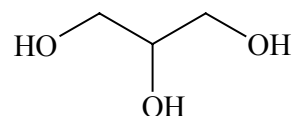


Ciclohexanol

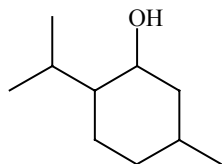
$\text{CH}_2=\text{CH-CH}_2\text{-OH}$   
2-Propen-1-ol  
Alc. alílico



Etilenglicol  
1,2-etanodiol



Glicerol  
Glicerina  
1,2,3-propanotriol



2-isopropil-5-metilciclohexanol  
Mentol