

CITOLOXÍA

A CÉLULA Ó MICROSCOPIO

Carmen Cid Manzano

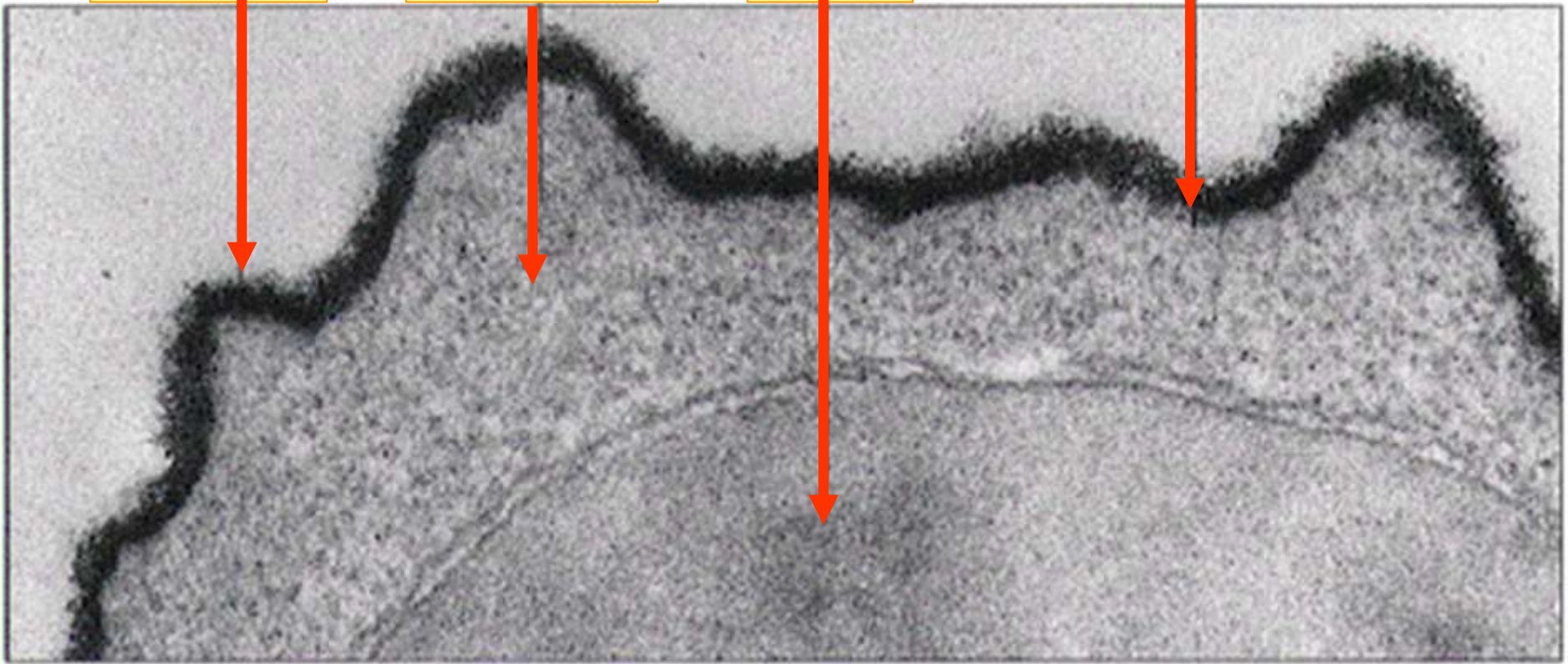
I.E.S. Otero Pedrayo. Ourense. Departamento Bioloxía e Xeoloxía.

Glucocalix

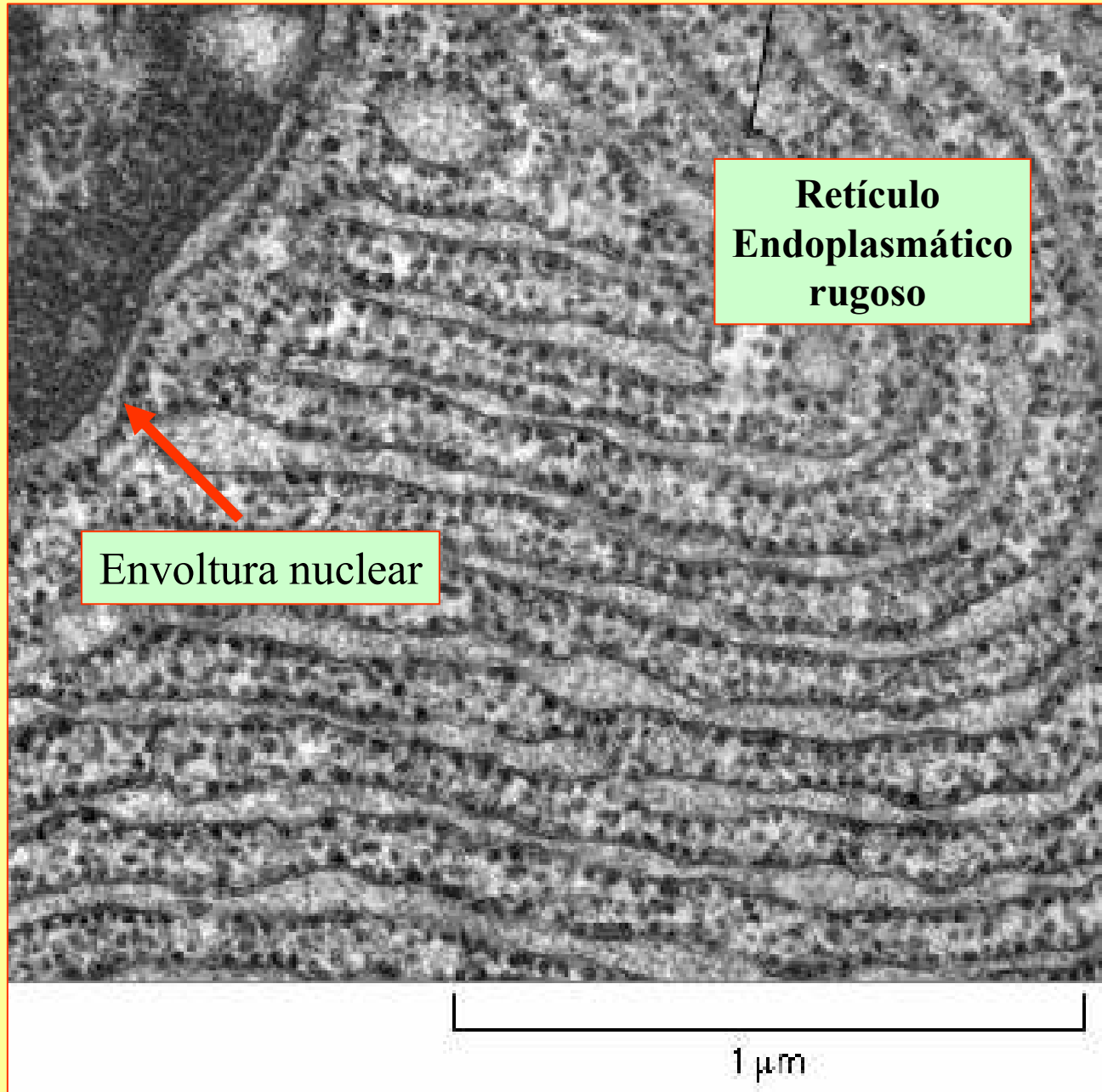
Citoplasma

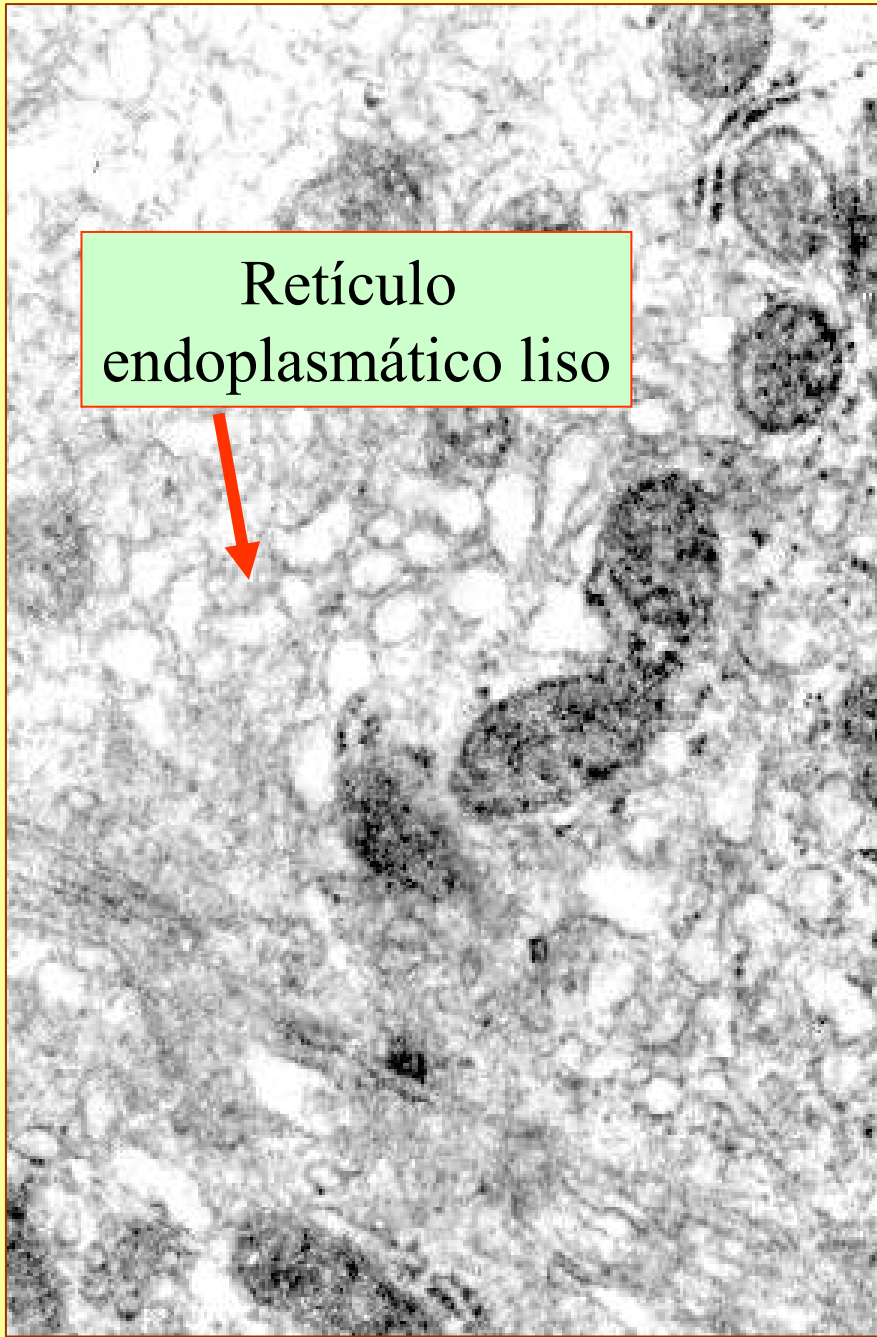
Núcleo

Membrana plasmática

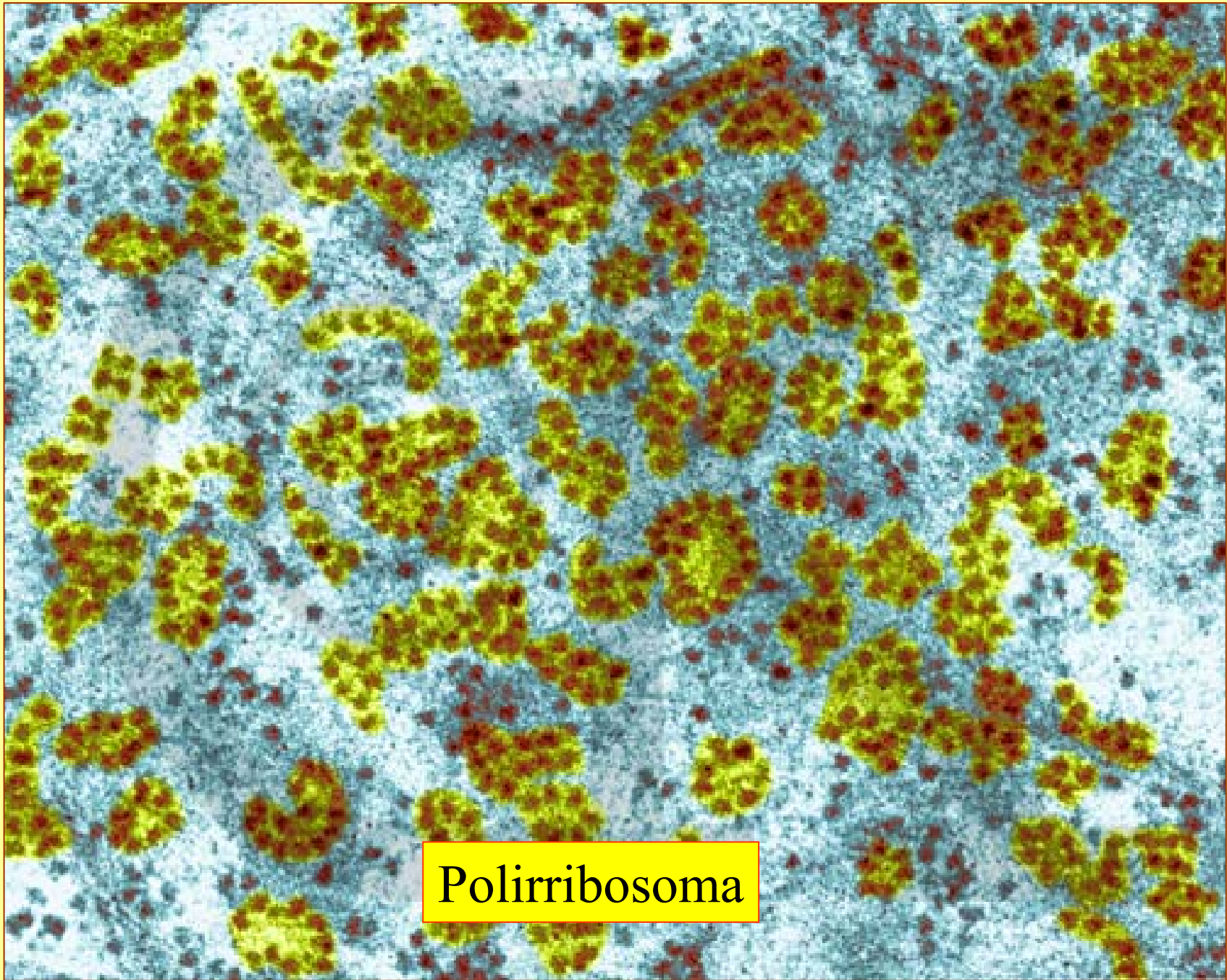


200 nm

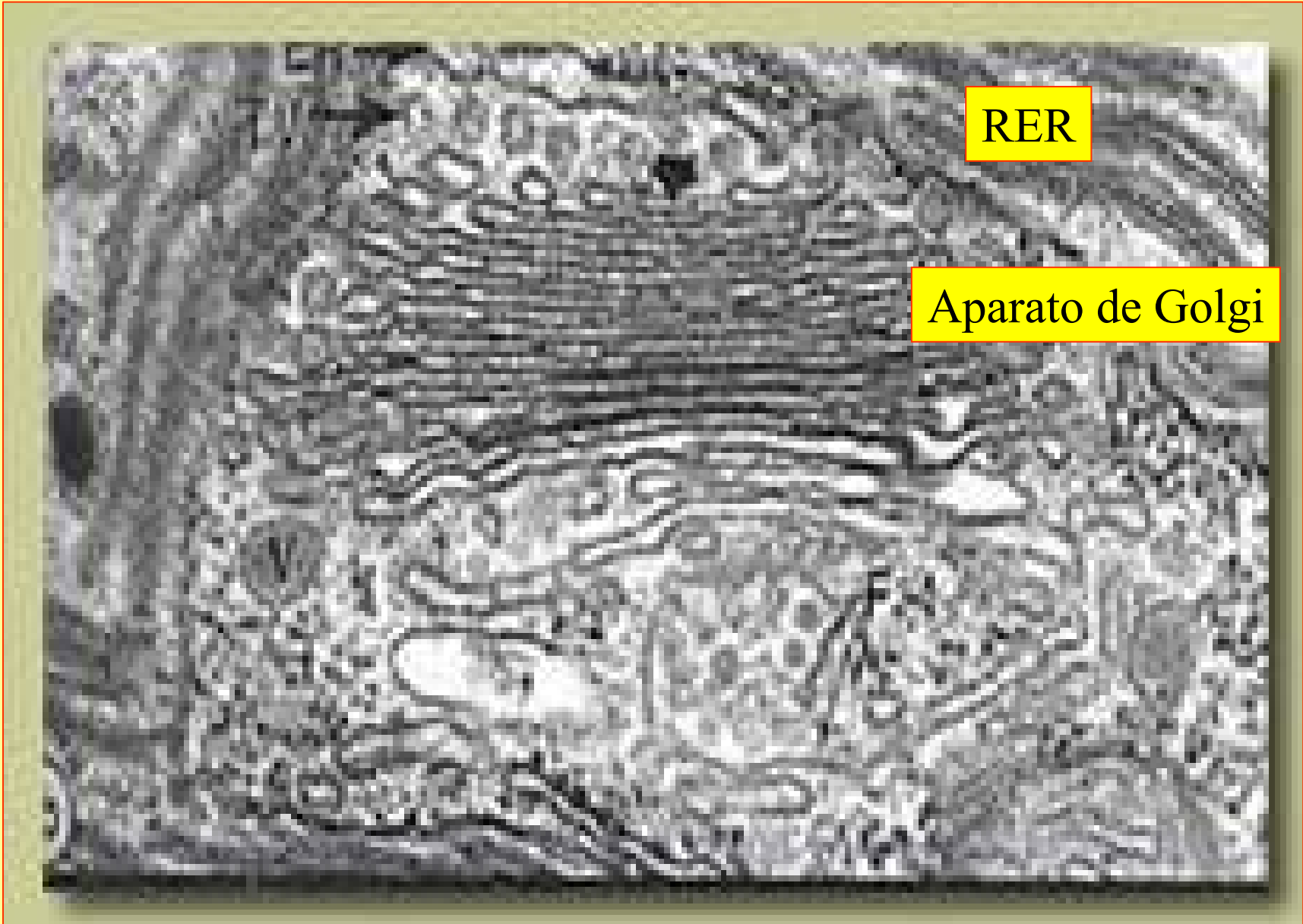




Retículo
endoplasmático liso

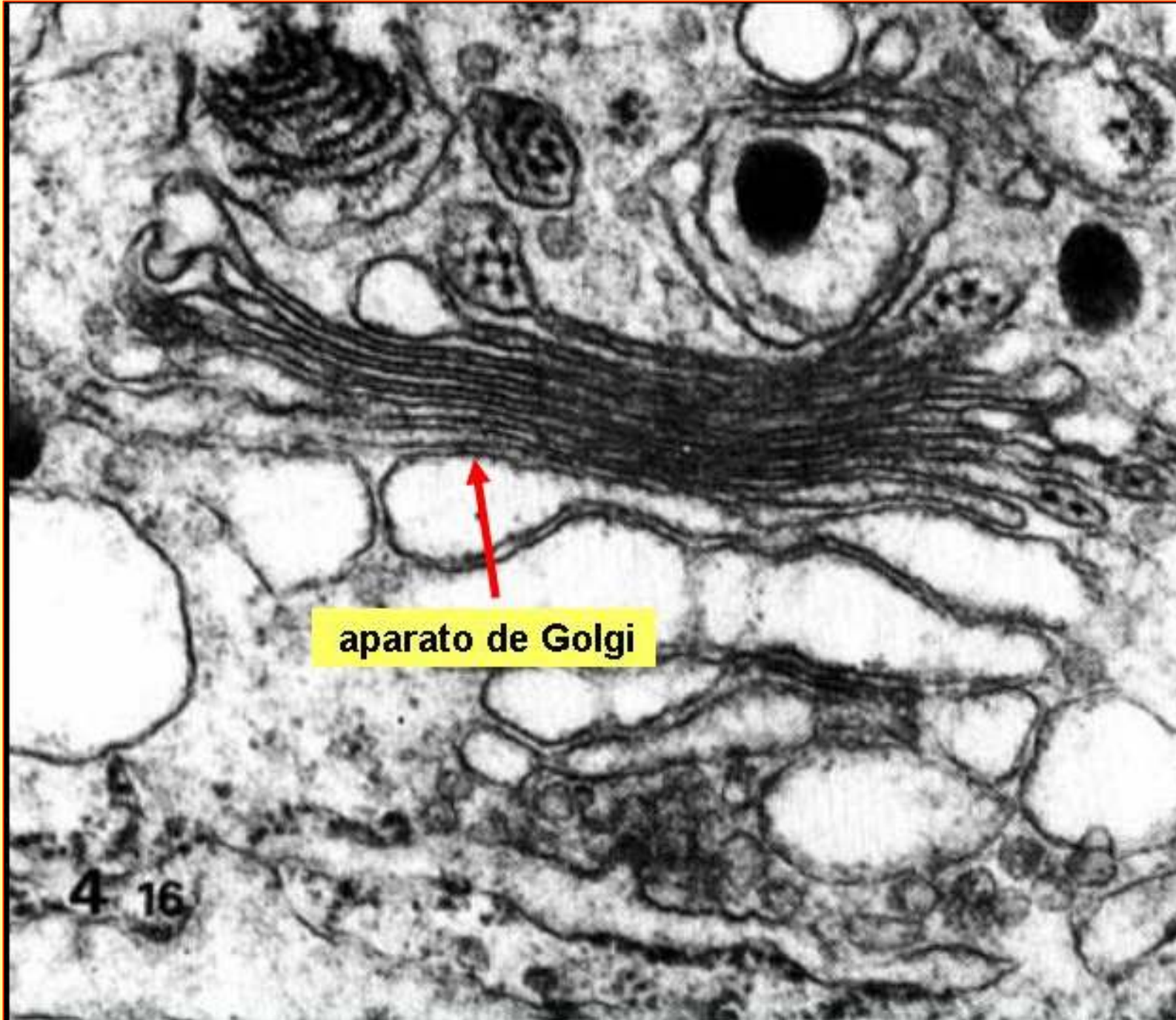


Polirribosoma



RER

Aparato de Golgi



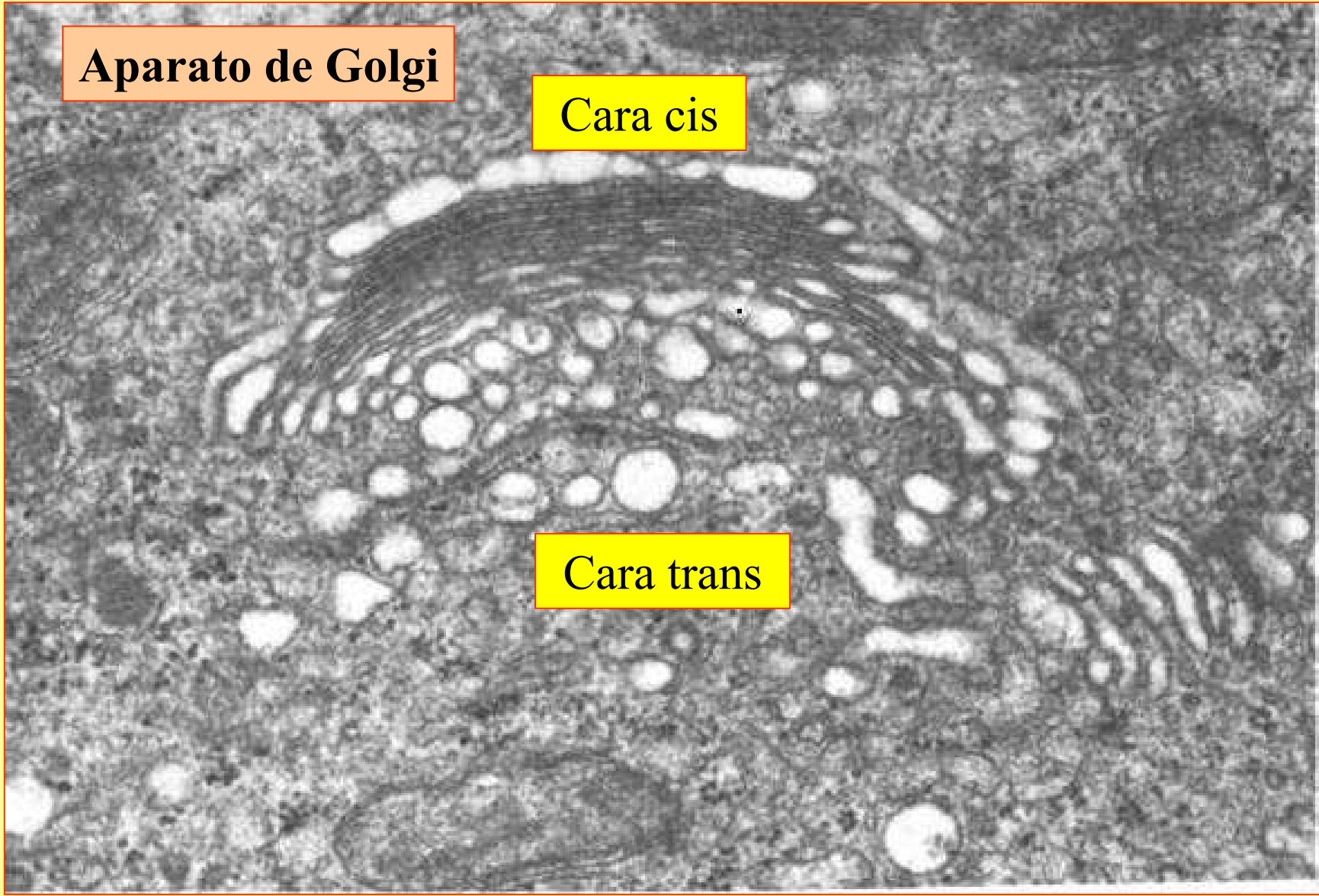
aparato de Golgi

4 16

Aparato de Golgi

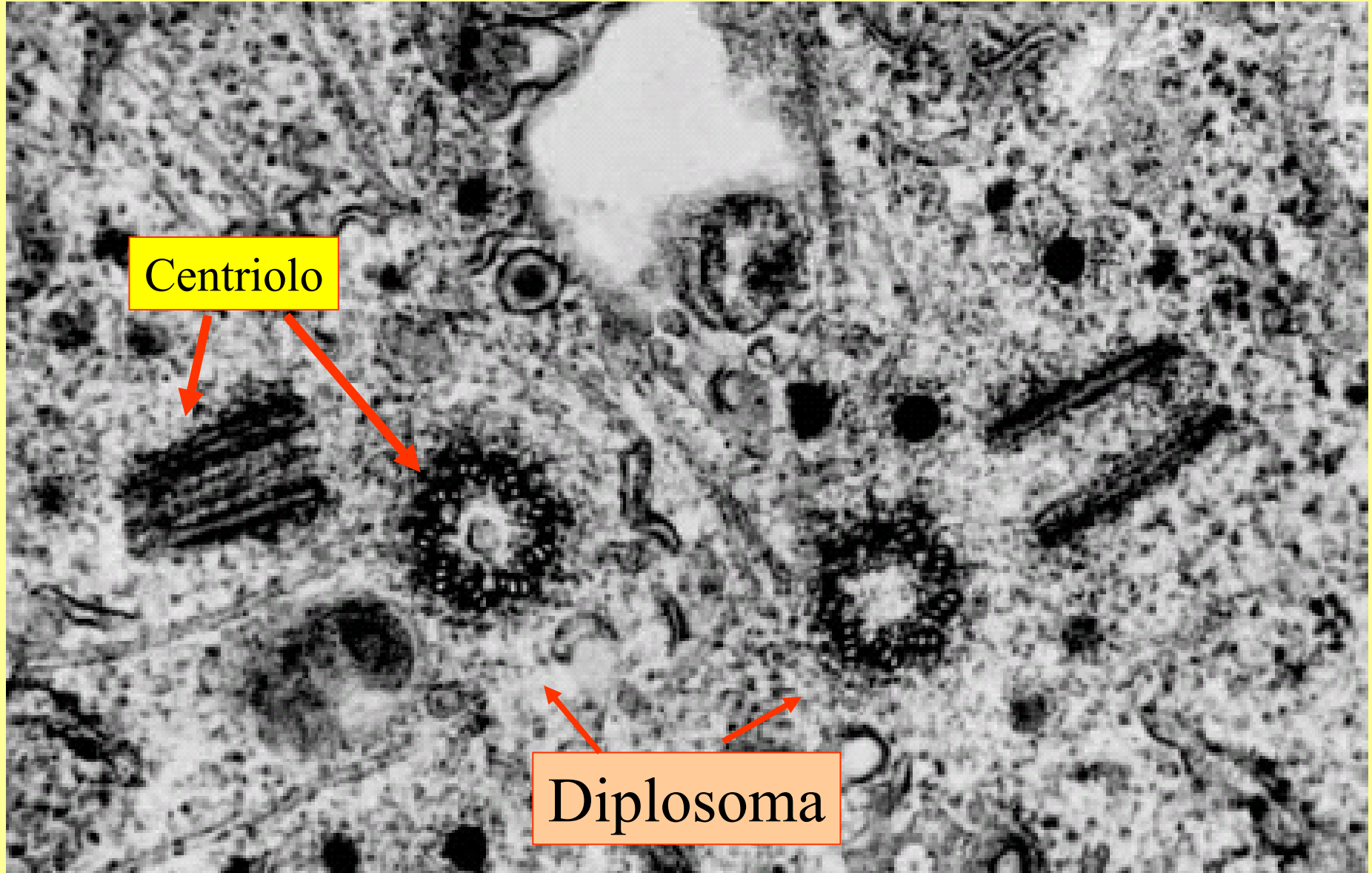
Cara cis

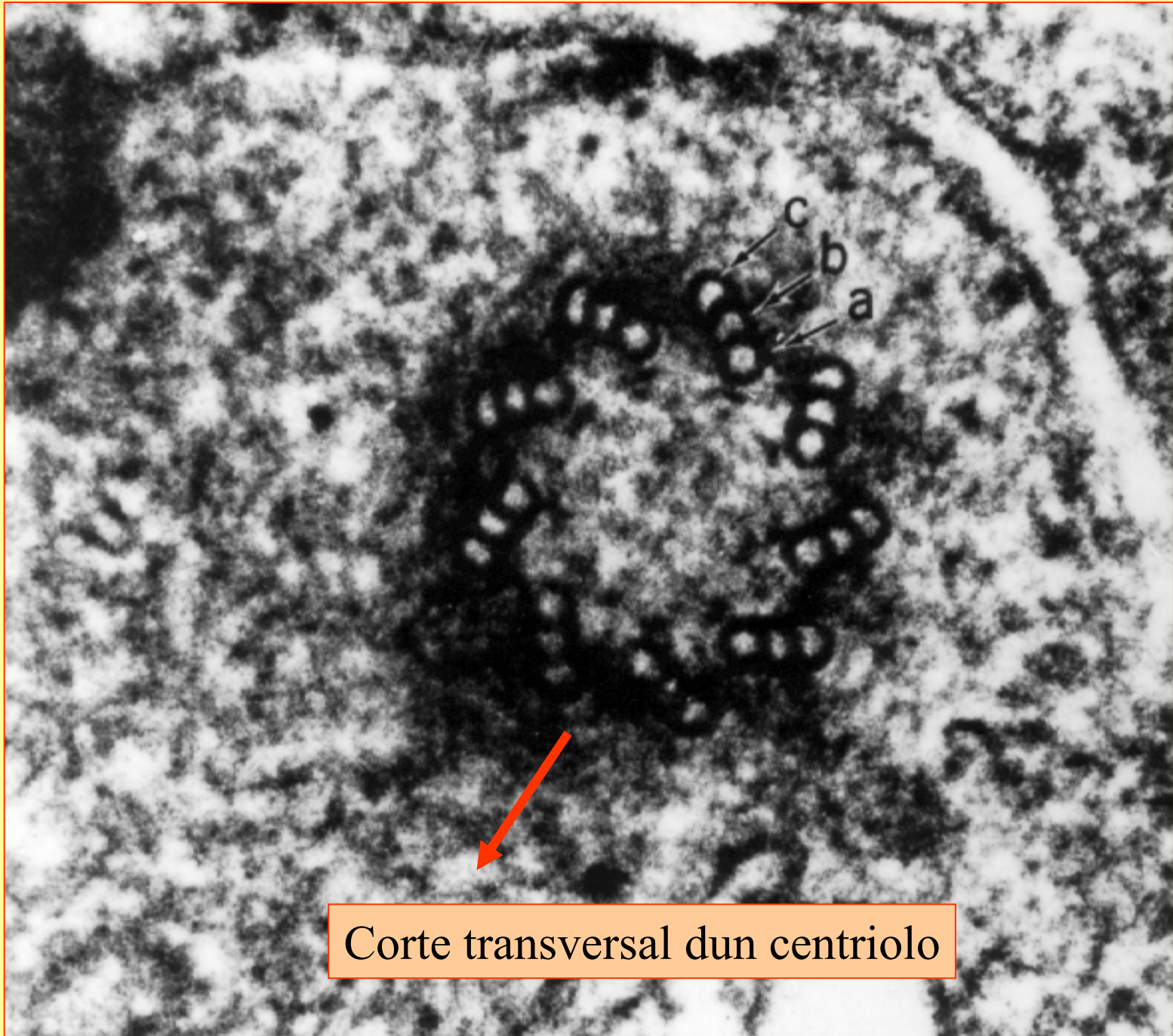
Cara trans



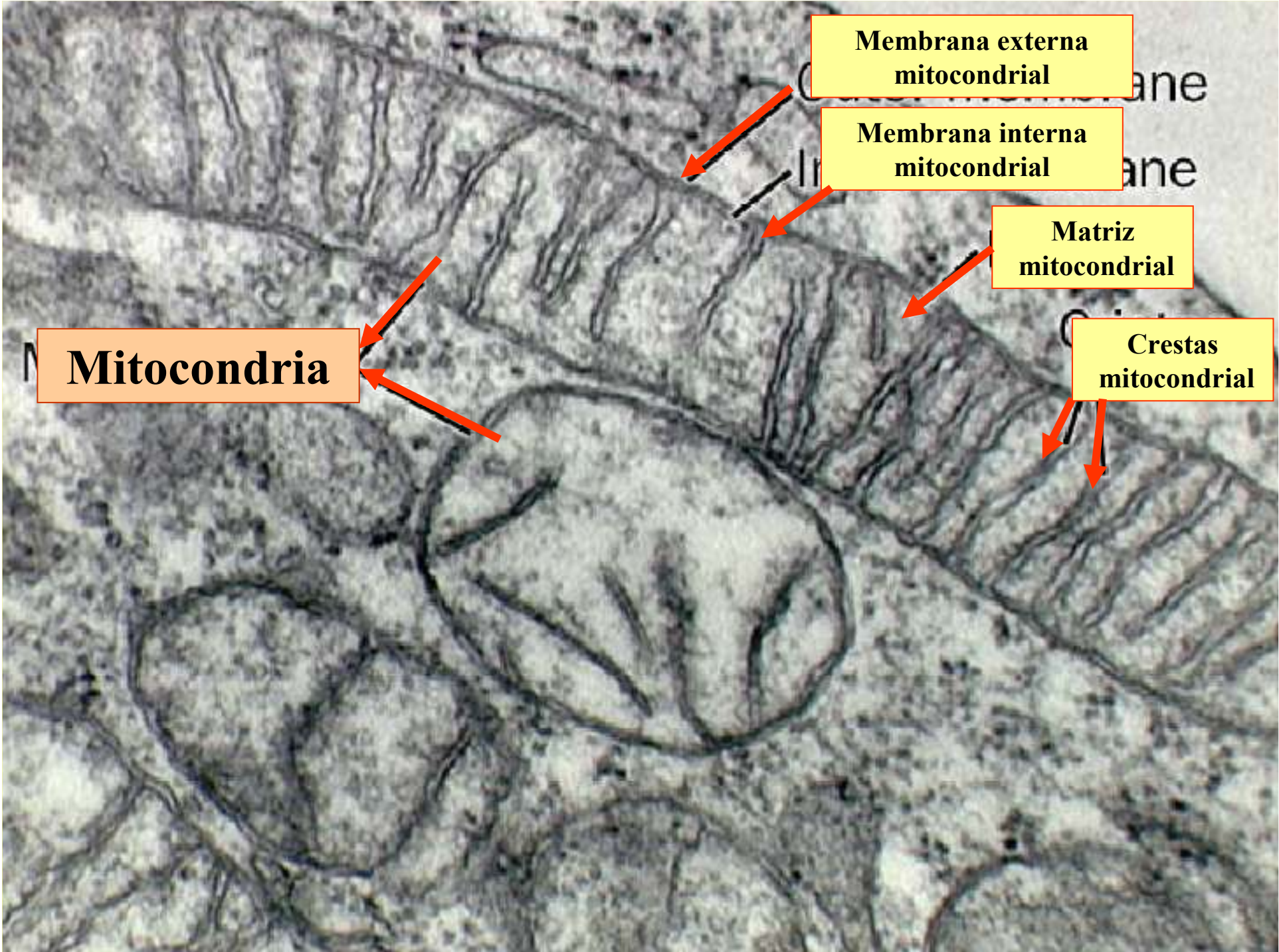
Aparato de Golgi







Corte transversal dun centriolo



**Membrana externa
mitocondrial**

**Membrana interna
mitocondrial**

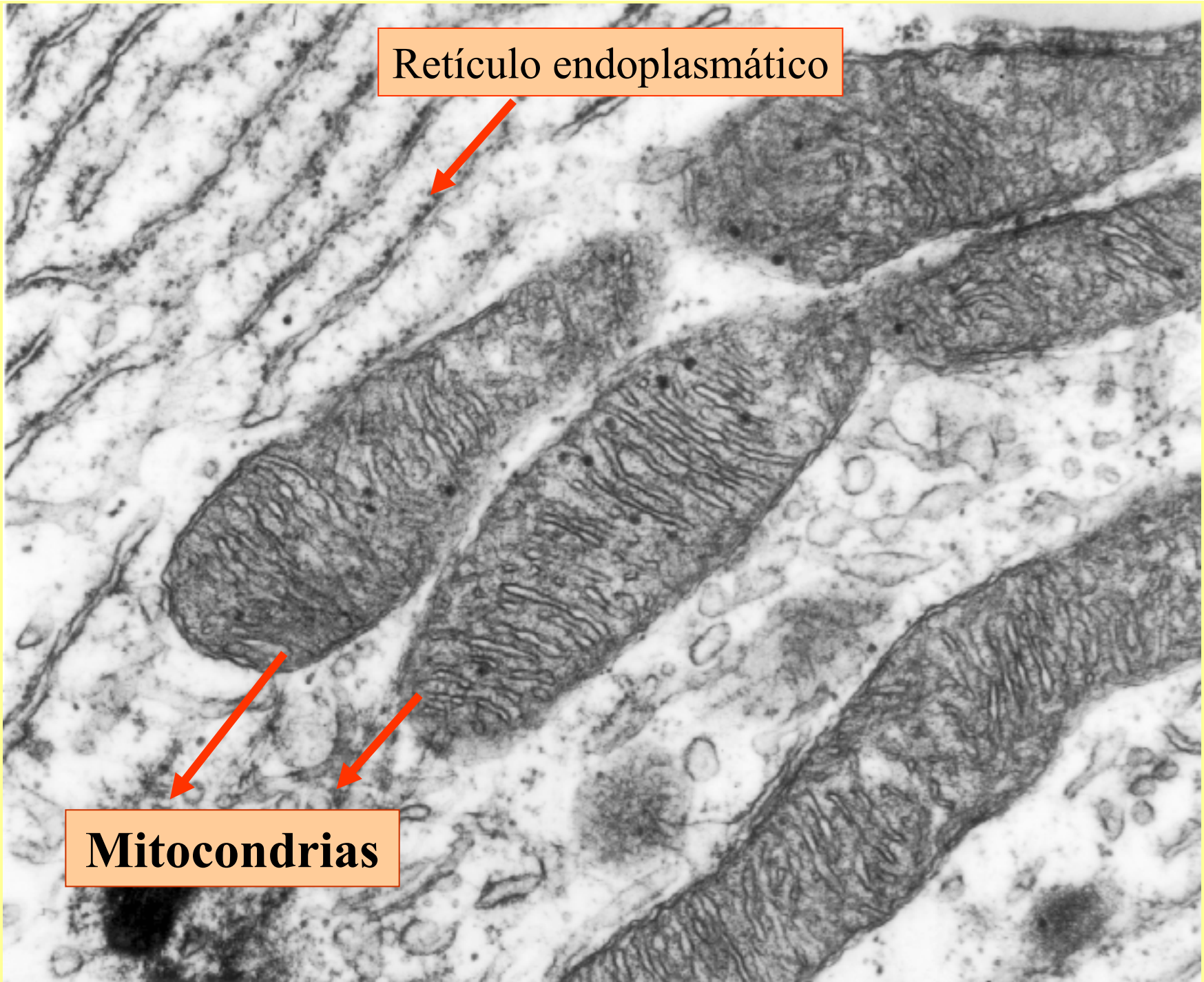
**Matriz
mitocondrial**

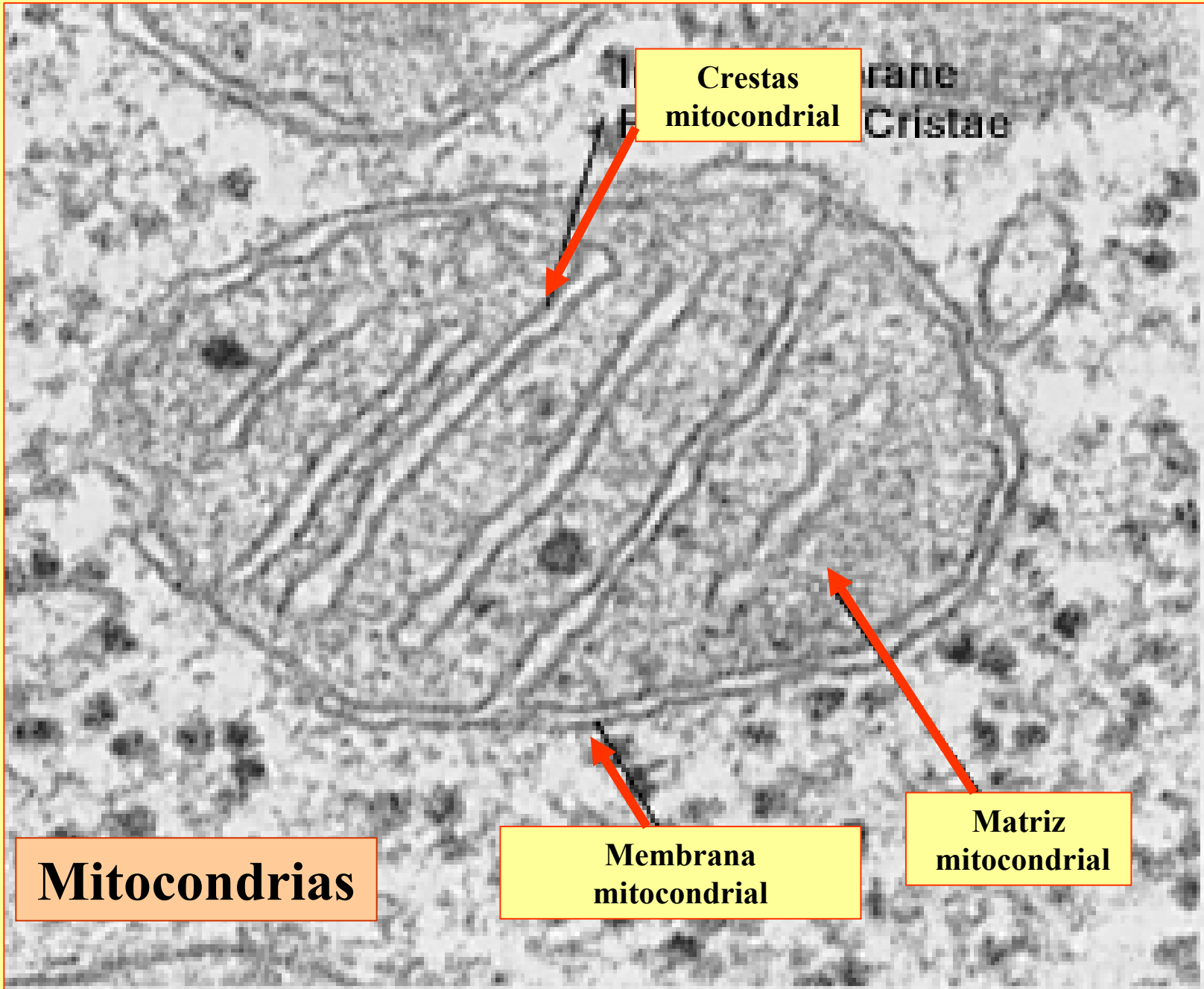
**Crestas
mitocondrial**

Mitochondria

Retículo endoplasmático

Mitocondrias





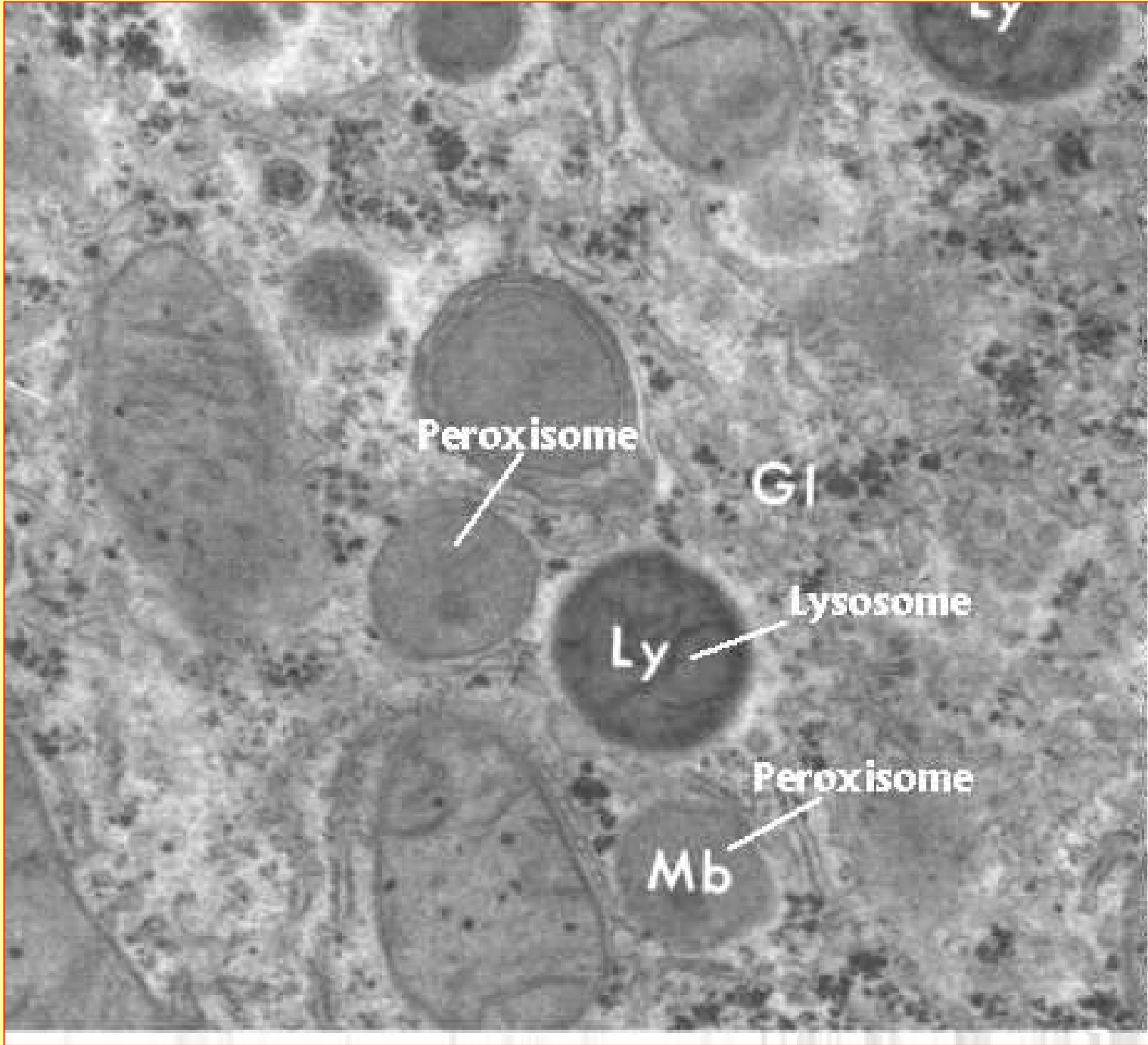
**Crestas
mitochondrial**

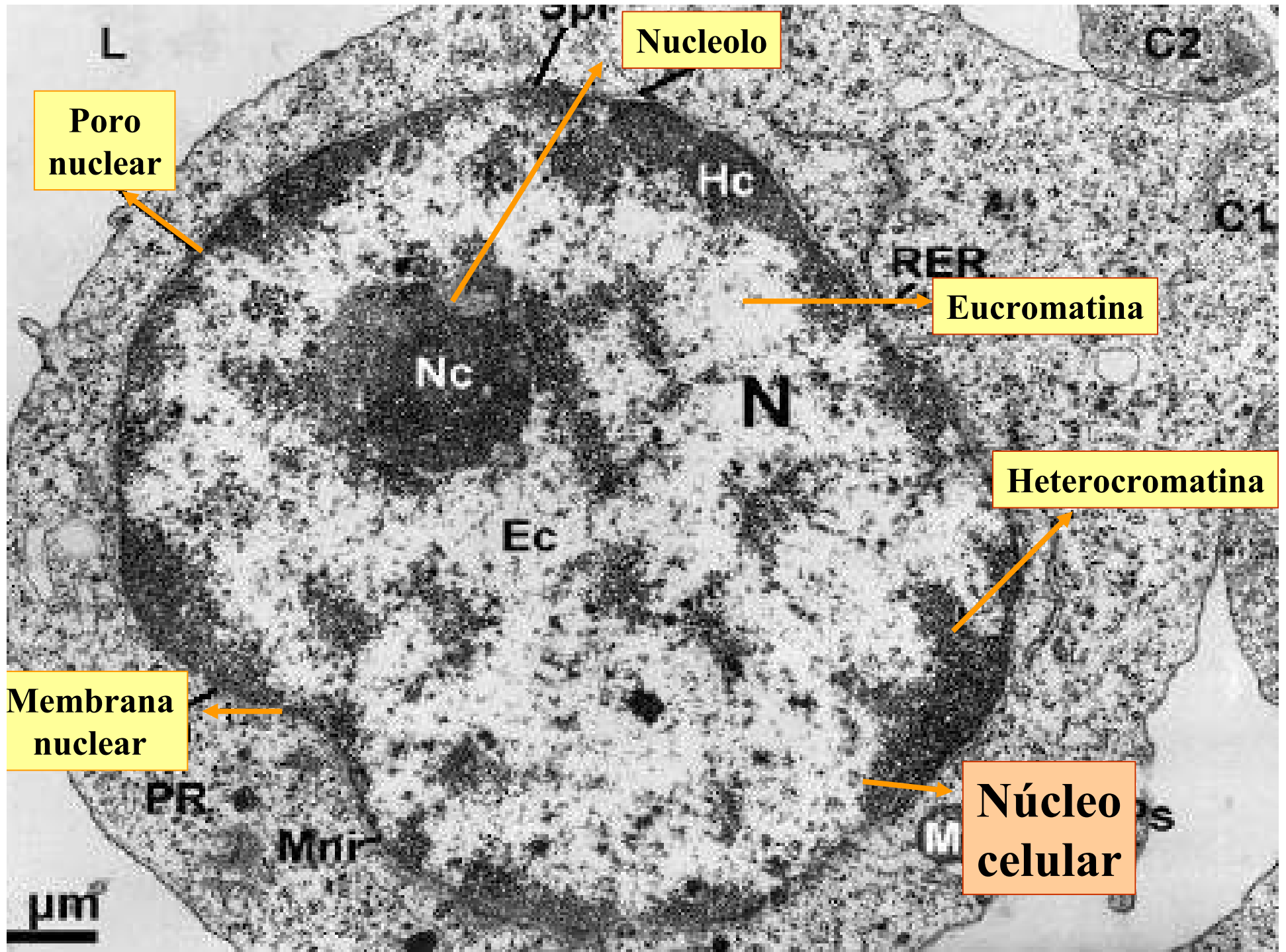
**Membrana
Cristae**

Mitocondrias

**Membrana
mitochondrial**

**Matriz
mitochondrial**





Nucleolo

Poro nuclear

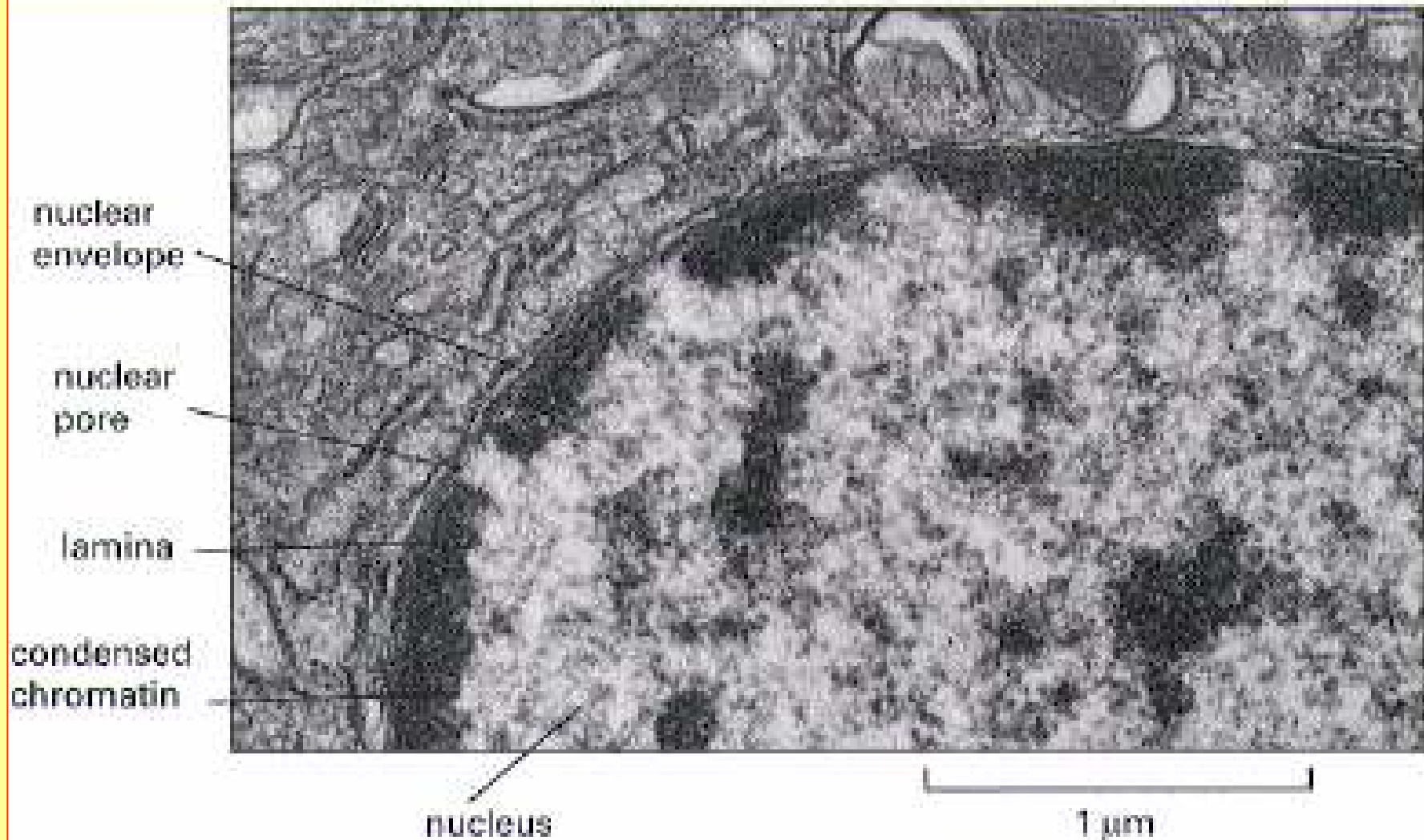
Eucromatina

Heterocromatina

Núcleo celular

Membrana nuclear

μm



nuclear envelope

nuclear pore

lamina

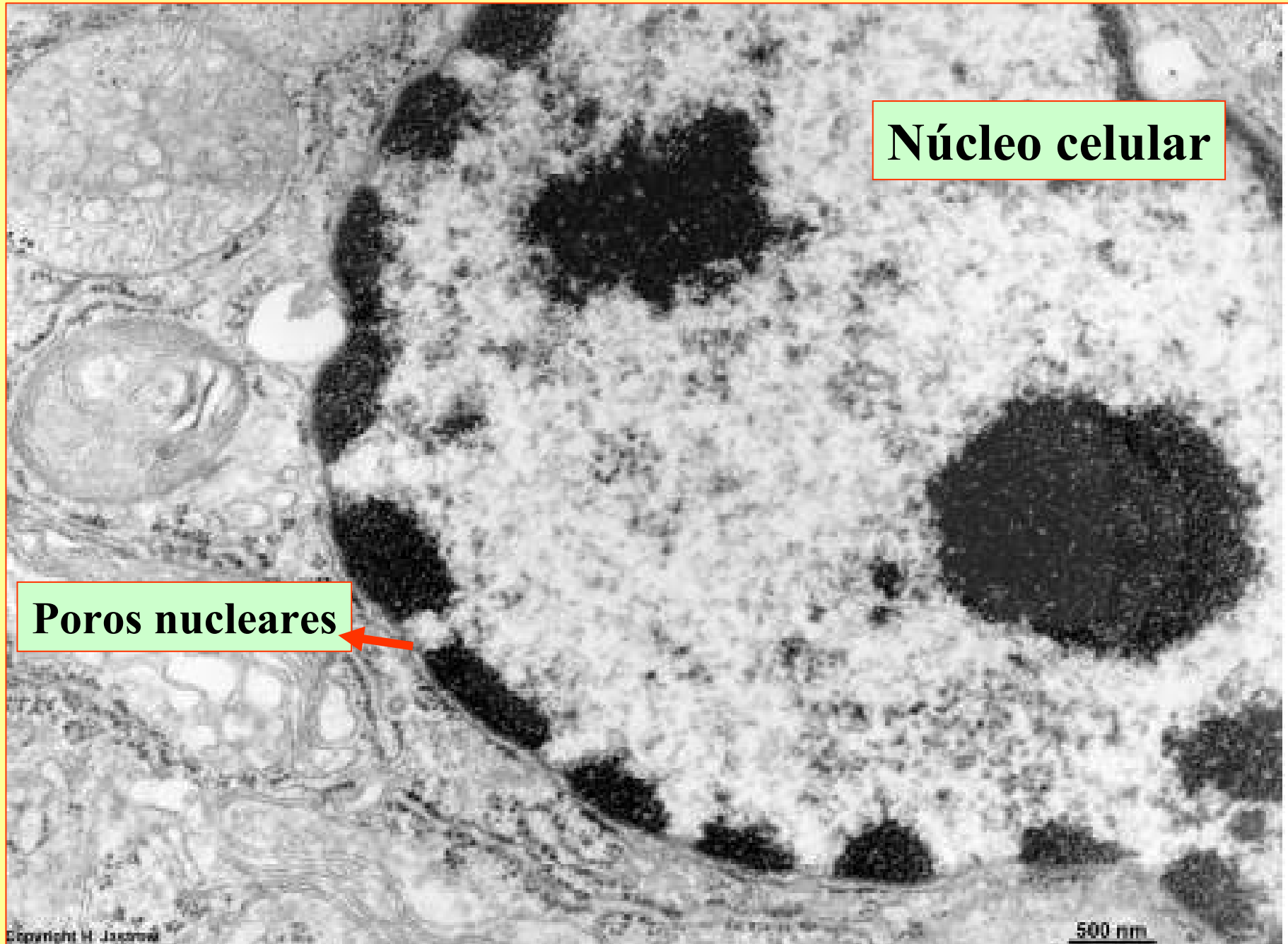
condensed chromatin

nucleus

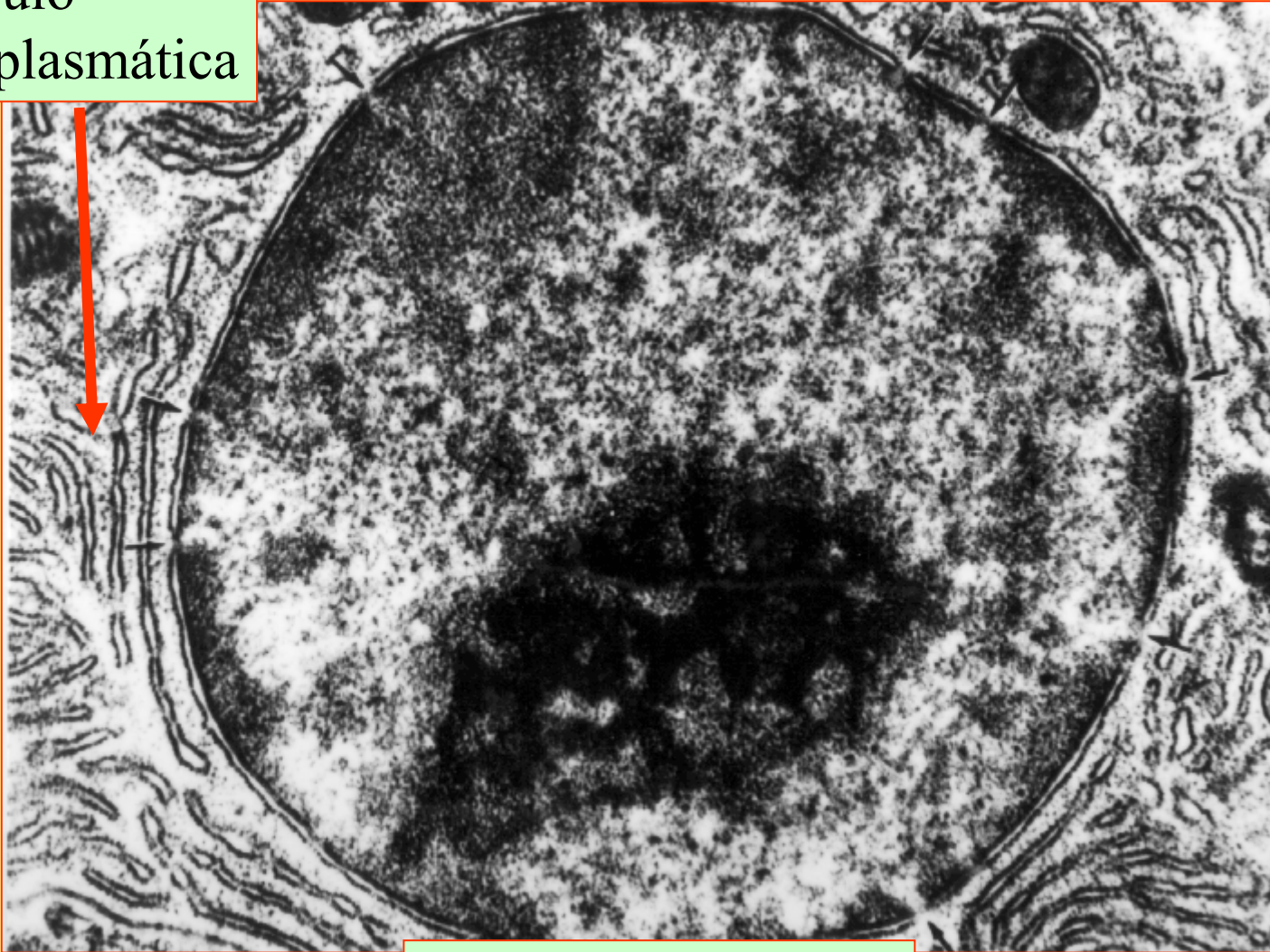
1 μm

Núcleo celular

Poros nucleares

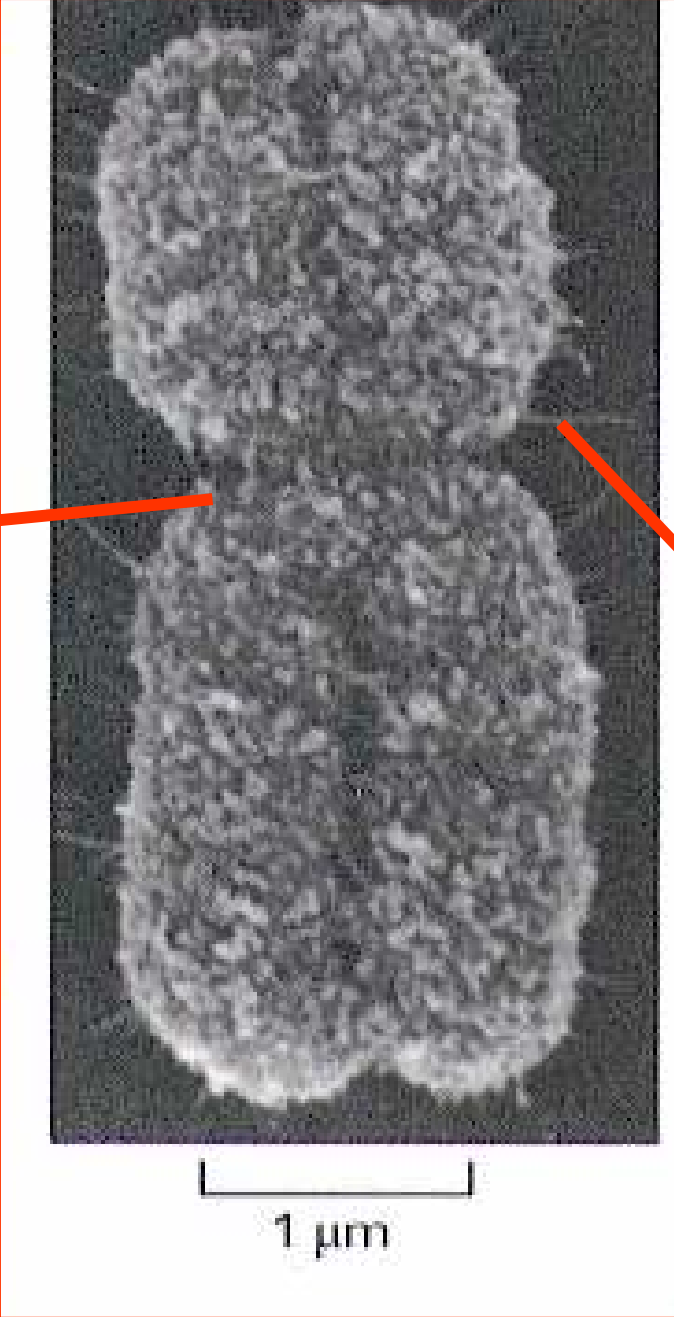


Retículo
endoplasmática



Núcleo celular

Centrómero



Cromosoma

Célula vegetal vista
con el microscopio
electrónico

10000X

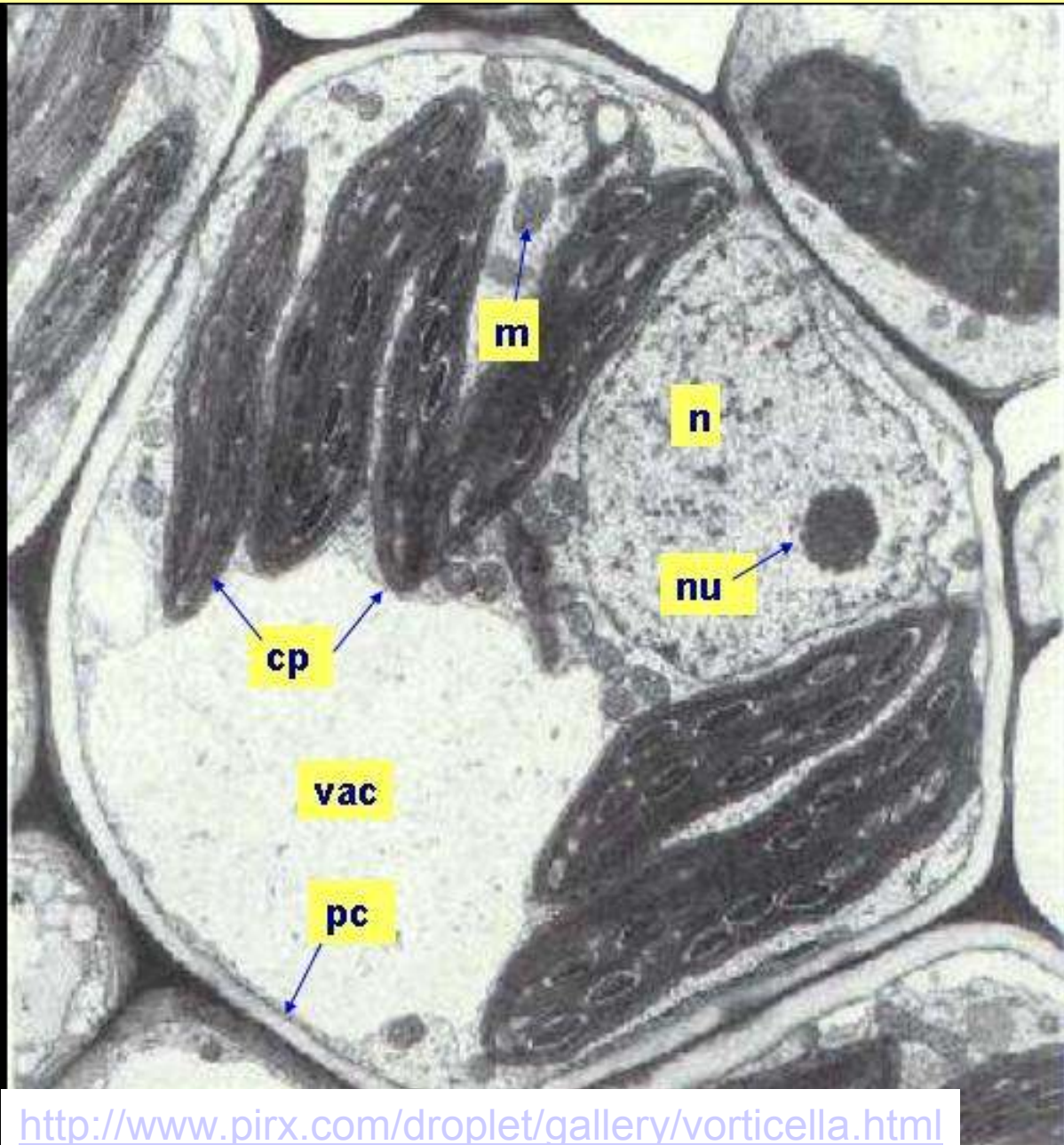
n = núcleo

nu = nucleolo

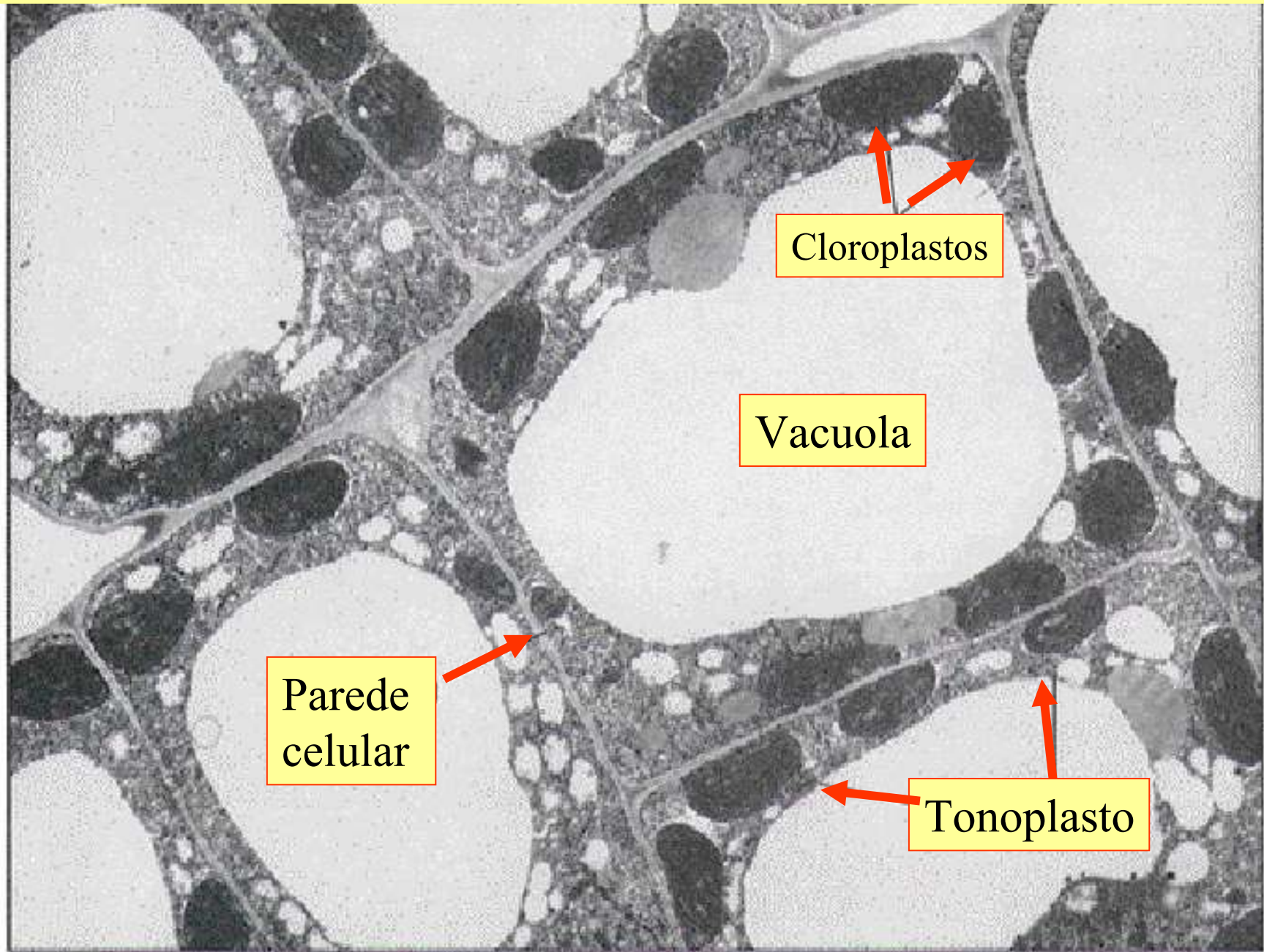
vac = vacuola

cp = cloroplasto

pc = pared celular

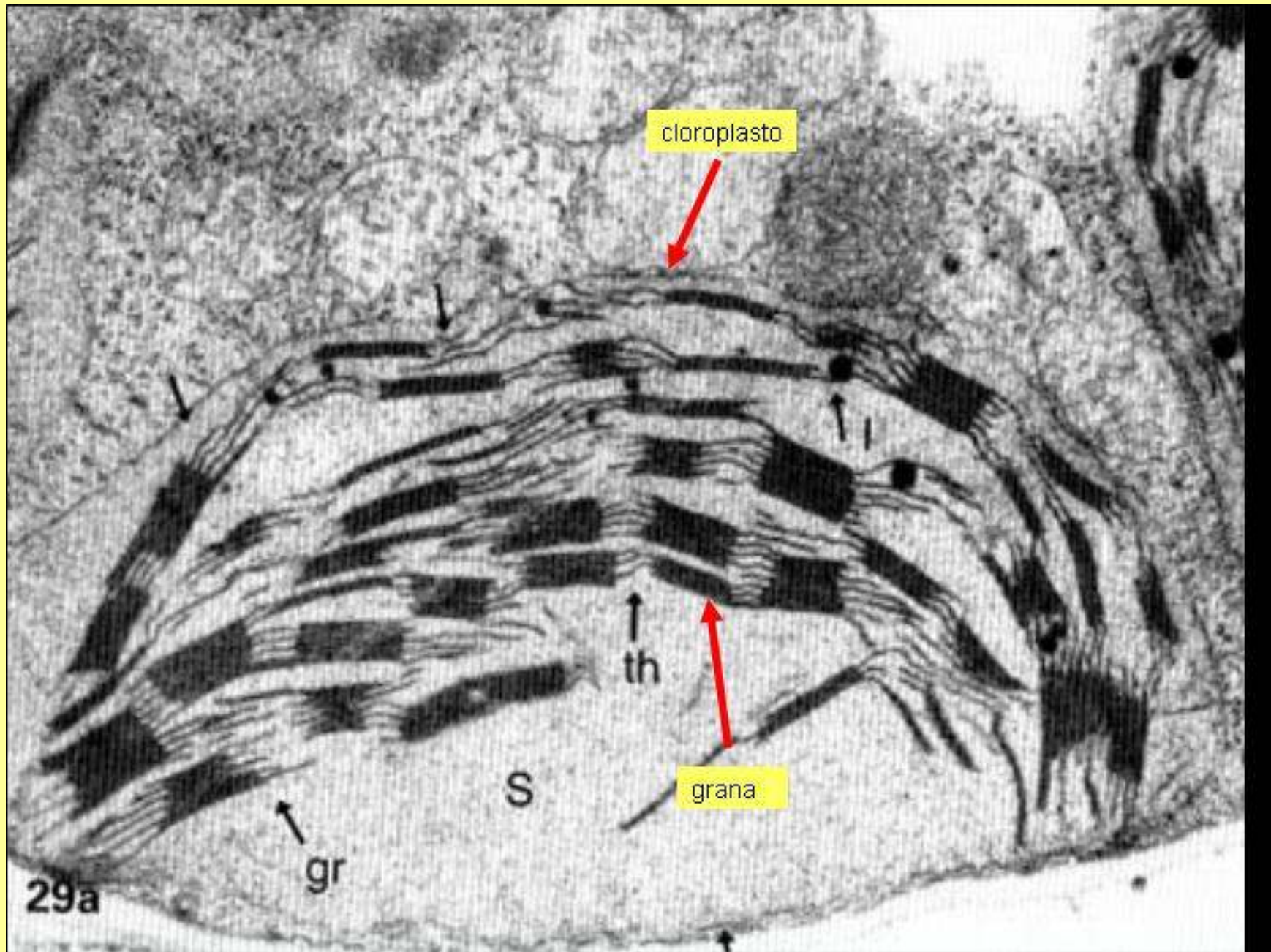


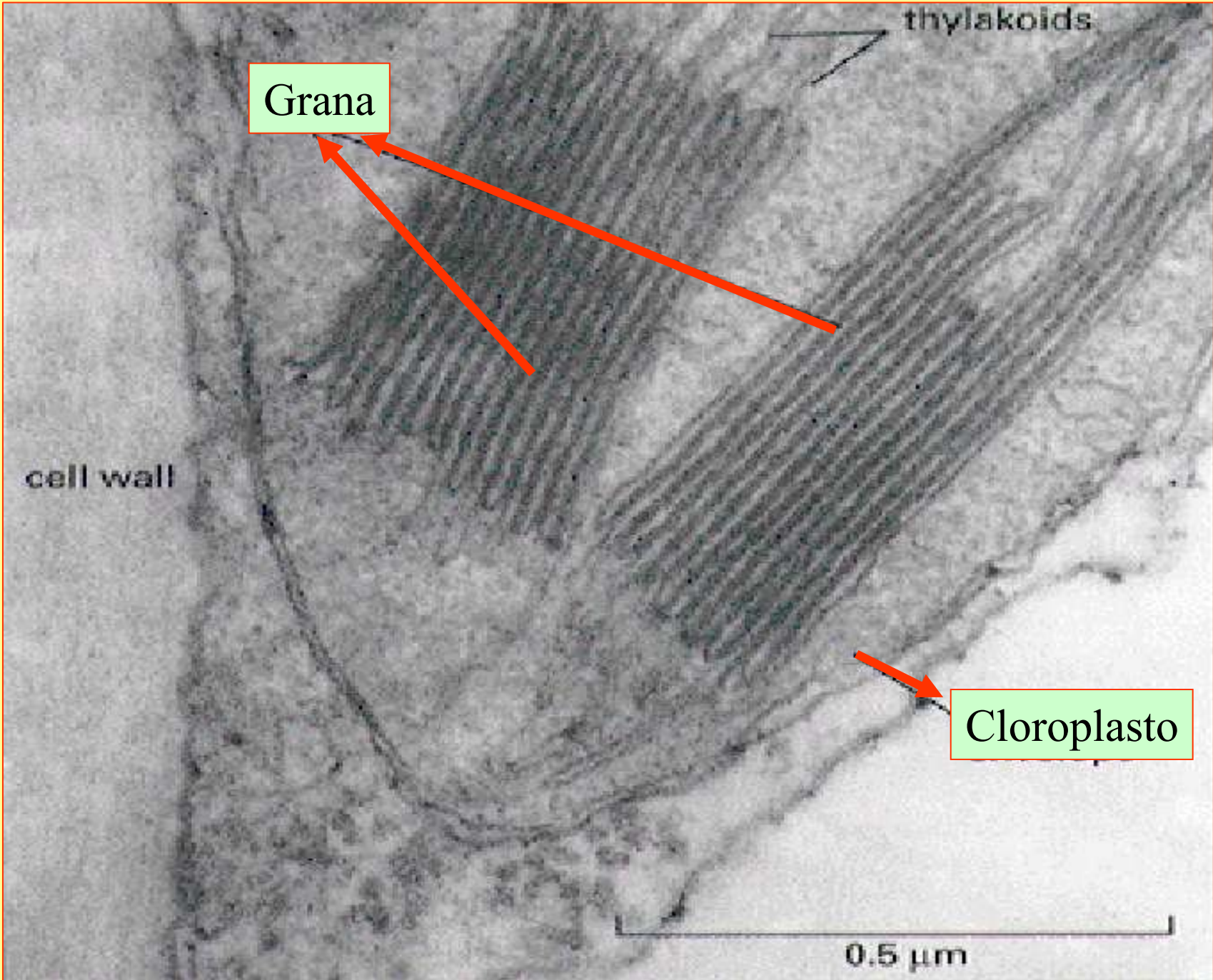
<http://www.pirx.com/droplet/gallery/vorticella.html>



Células vexetais

10 μm







*Departamento Bioloxía e Xeoloxía
I.E.S. Otero Pedrayo. Ourense.*