

A CÉLULA AO MICROSCOPIO



Carmen Cid Manzano

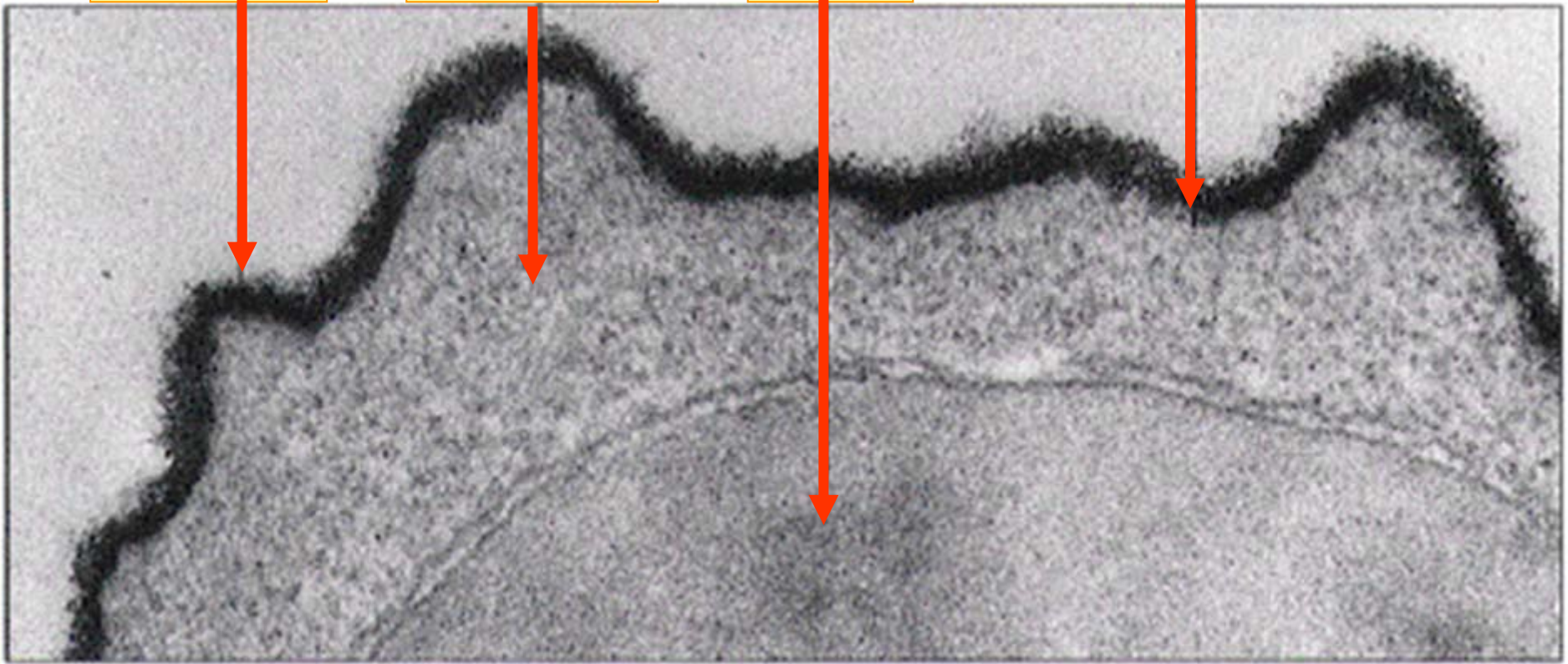
I.E.S. Otero Pedrayo. Ourense. Departamento Bioloxía e Xeoloxía.

Glucocalix

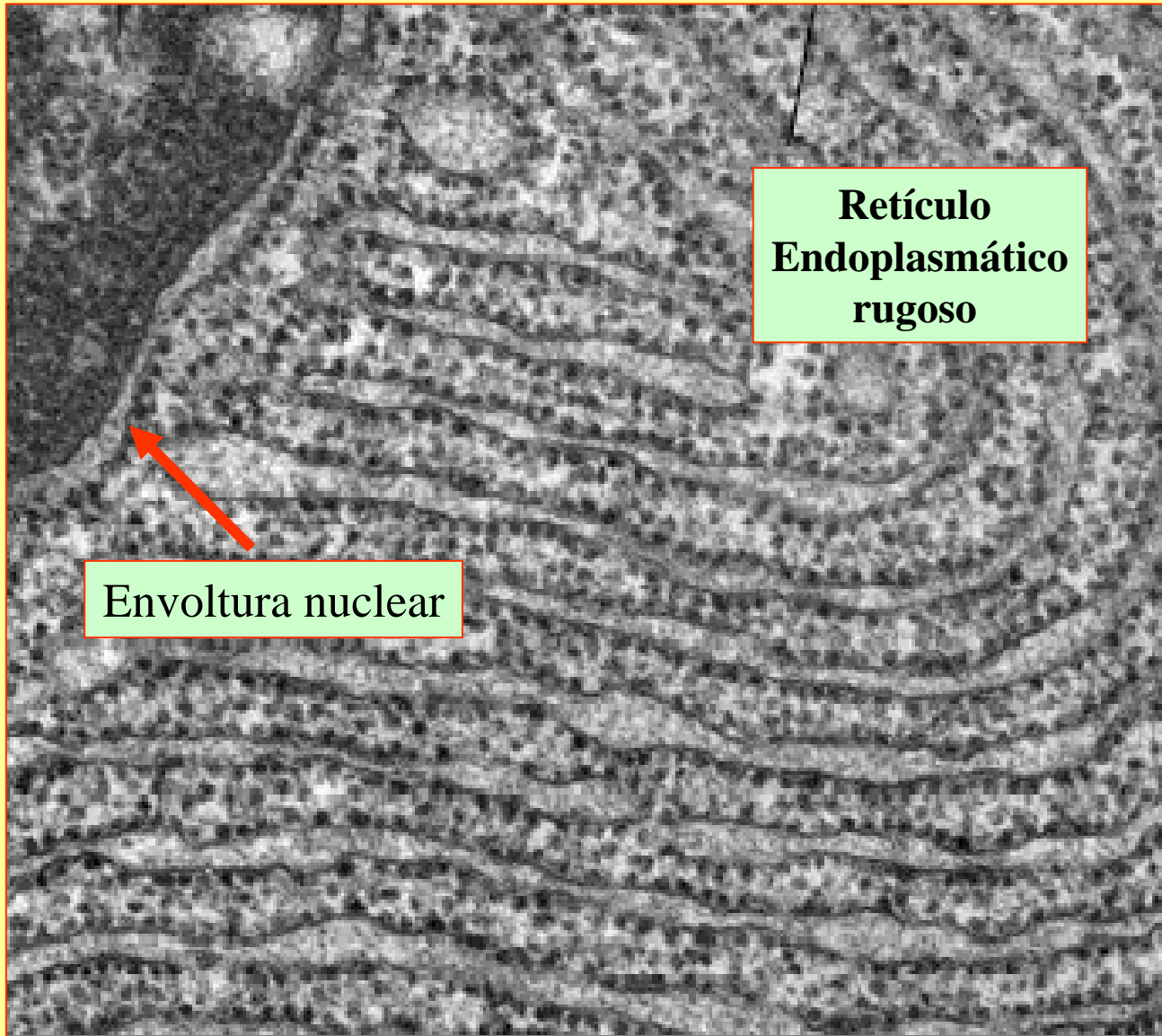
Citoplasma

Núcleo

Membrana plasmática



200 nm

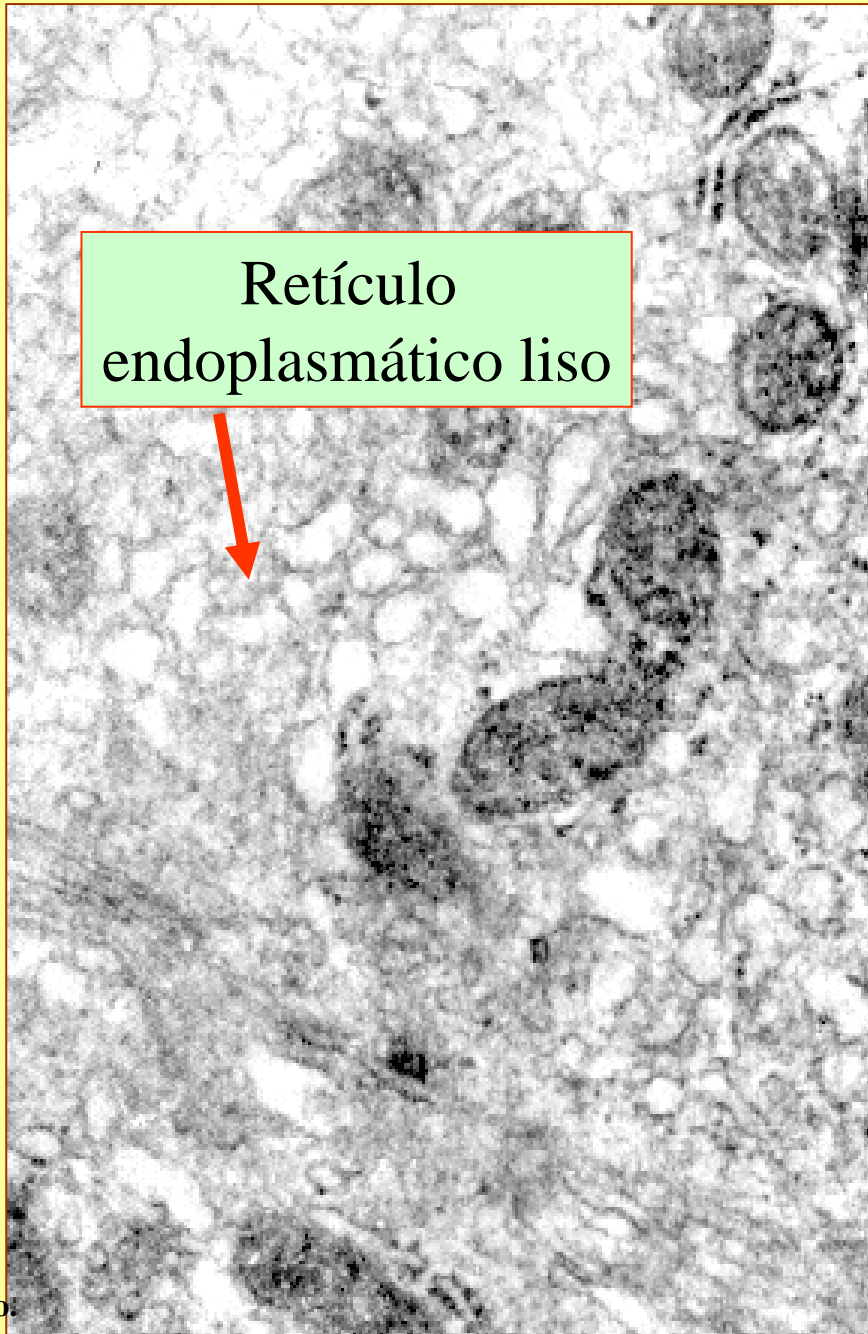


**Retículo
Endoplasmático
rugoso**

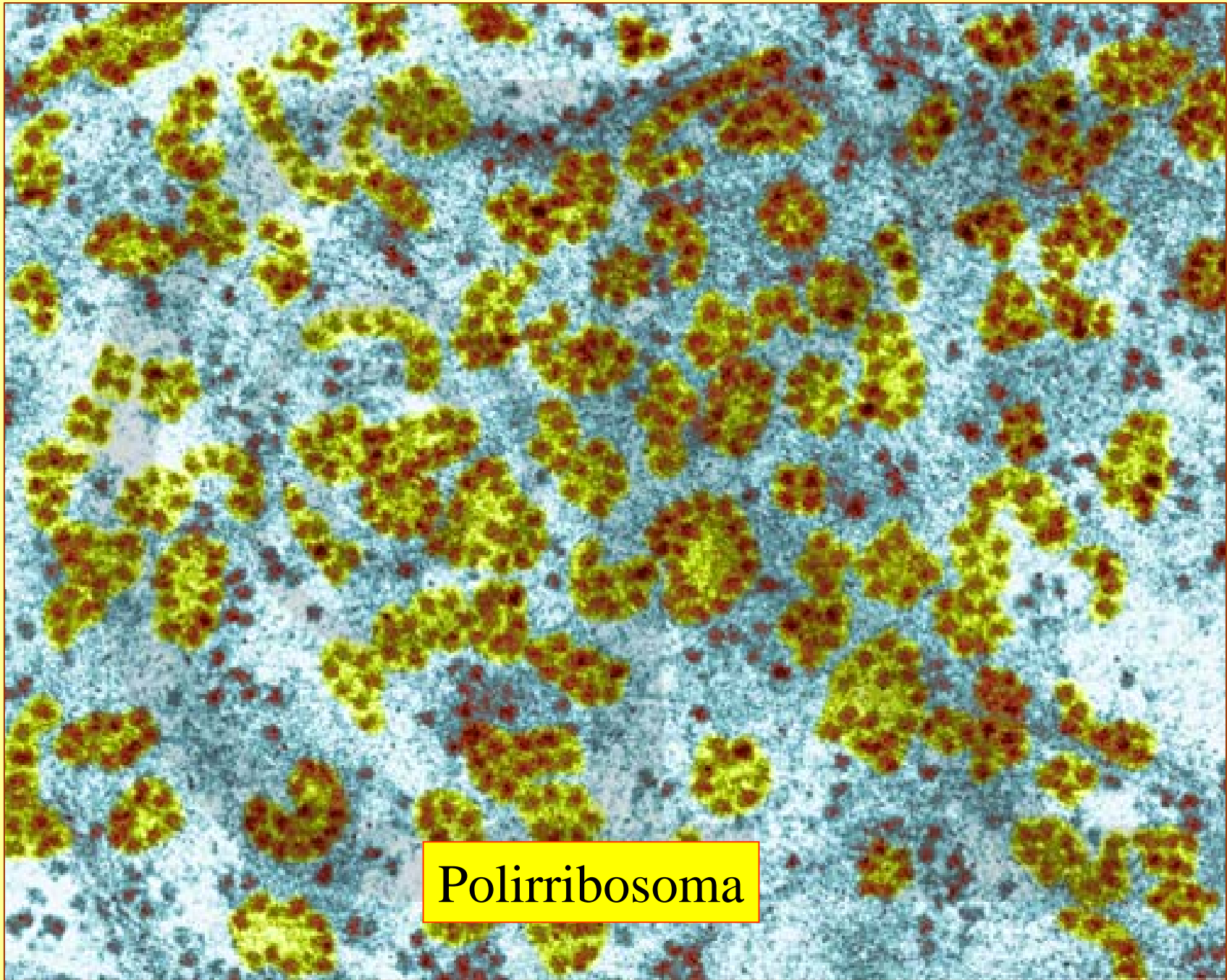
Envoltura nuclear



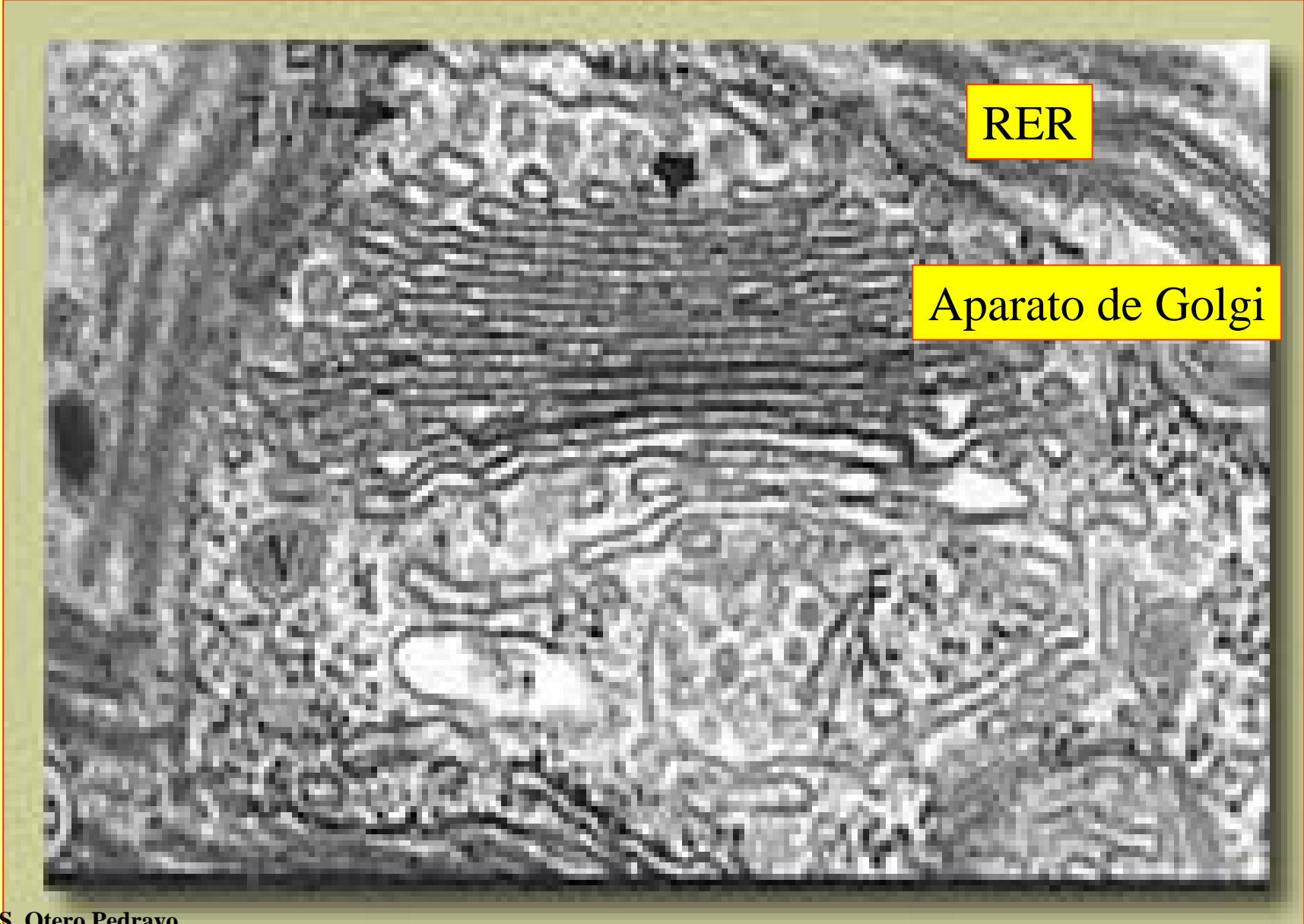
1 μ m



Retículo
endoplasmático liso

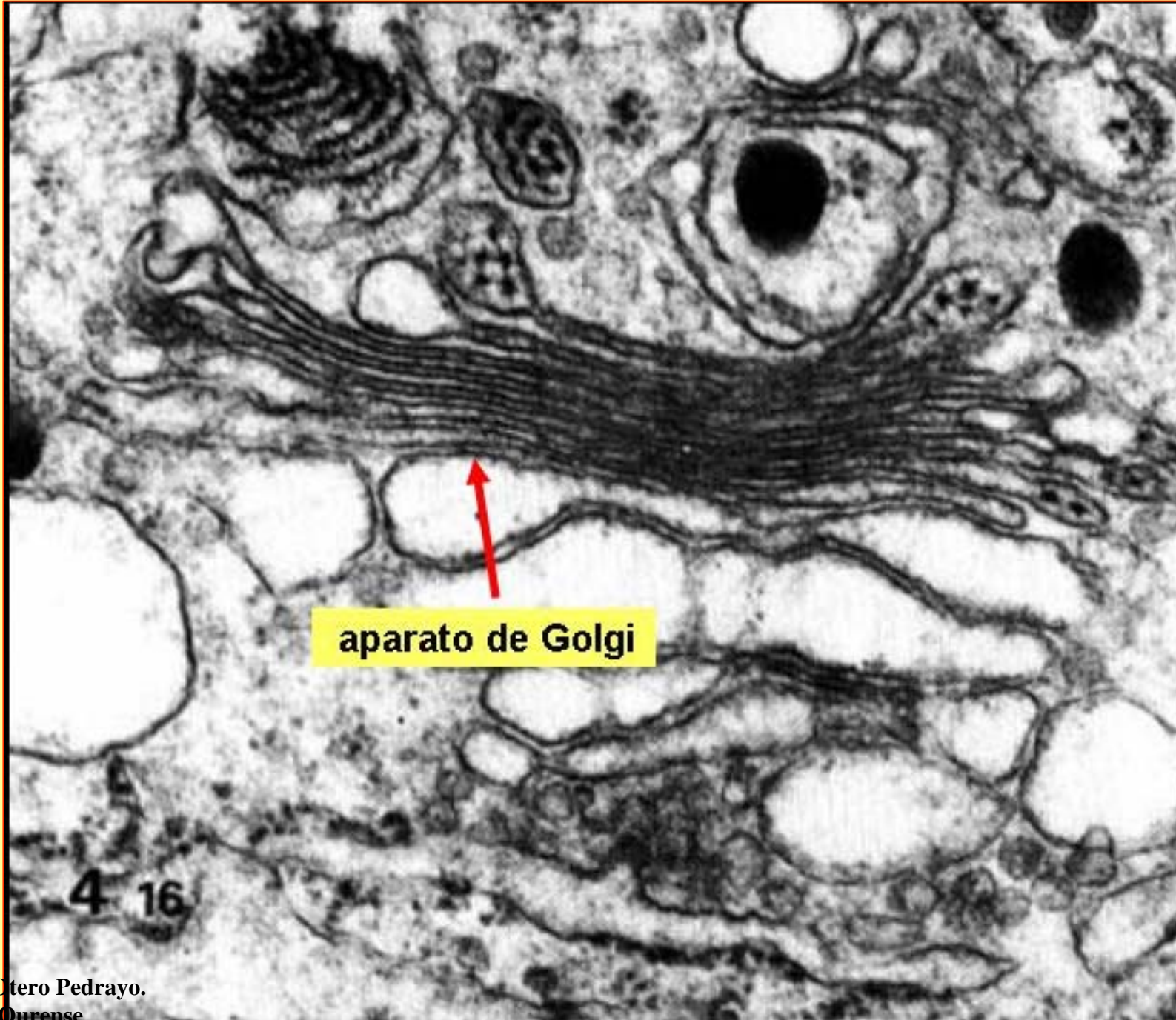


Polirribosoma



RER

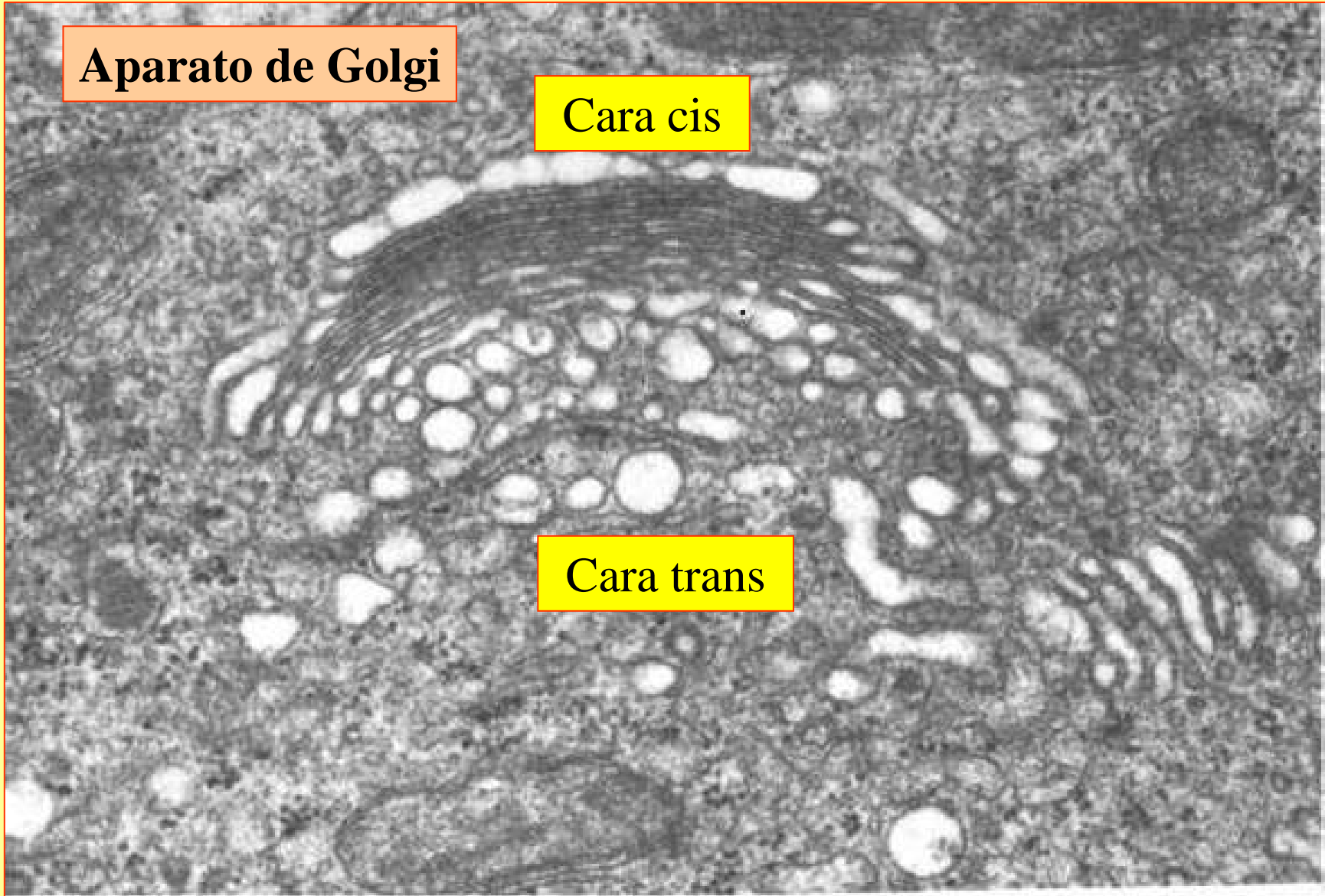
Aparato de Golgi



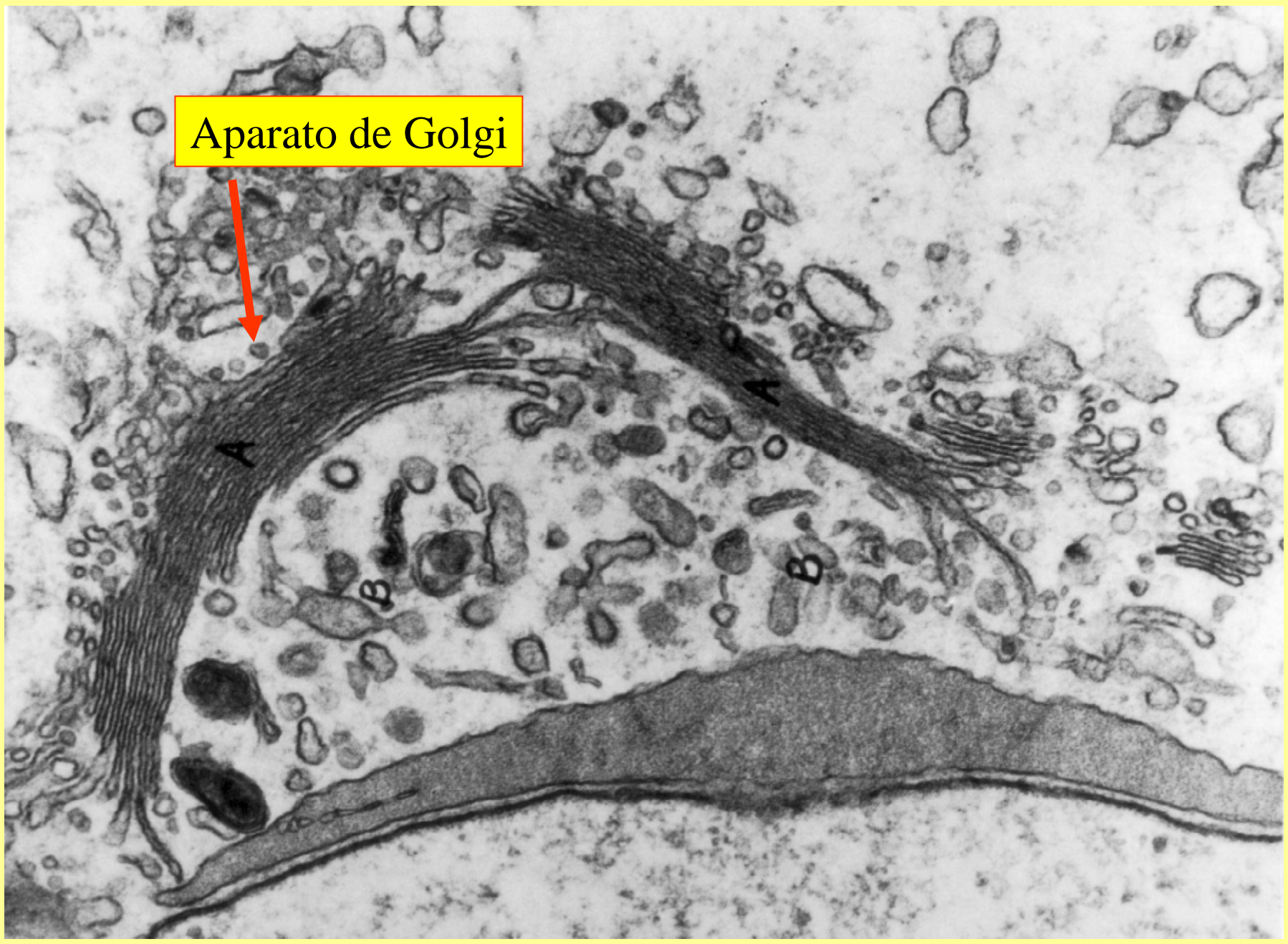
Aparato de Golgi

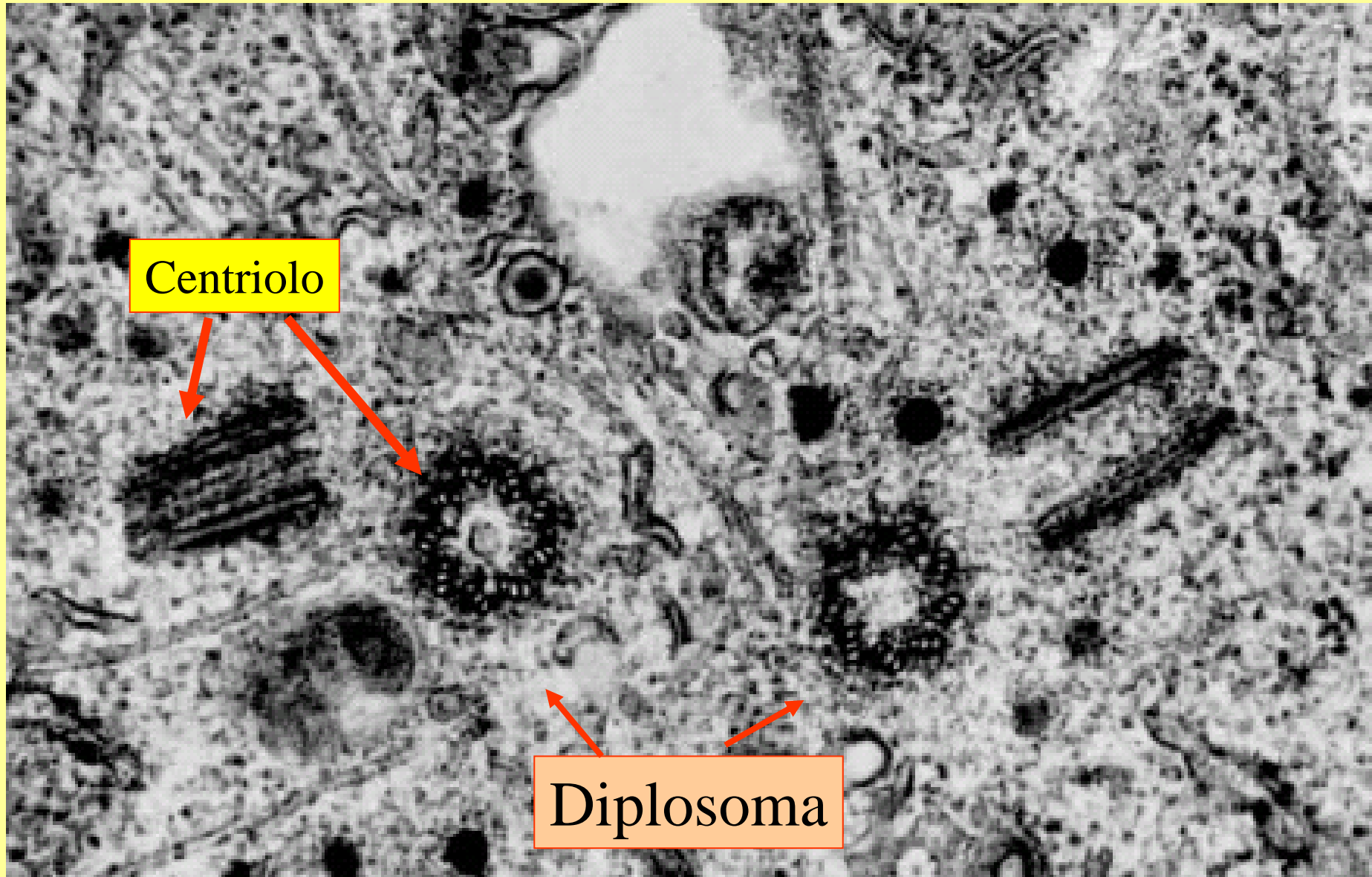
Cara cis

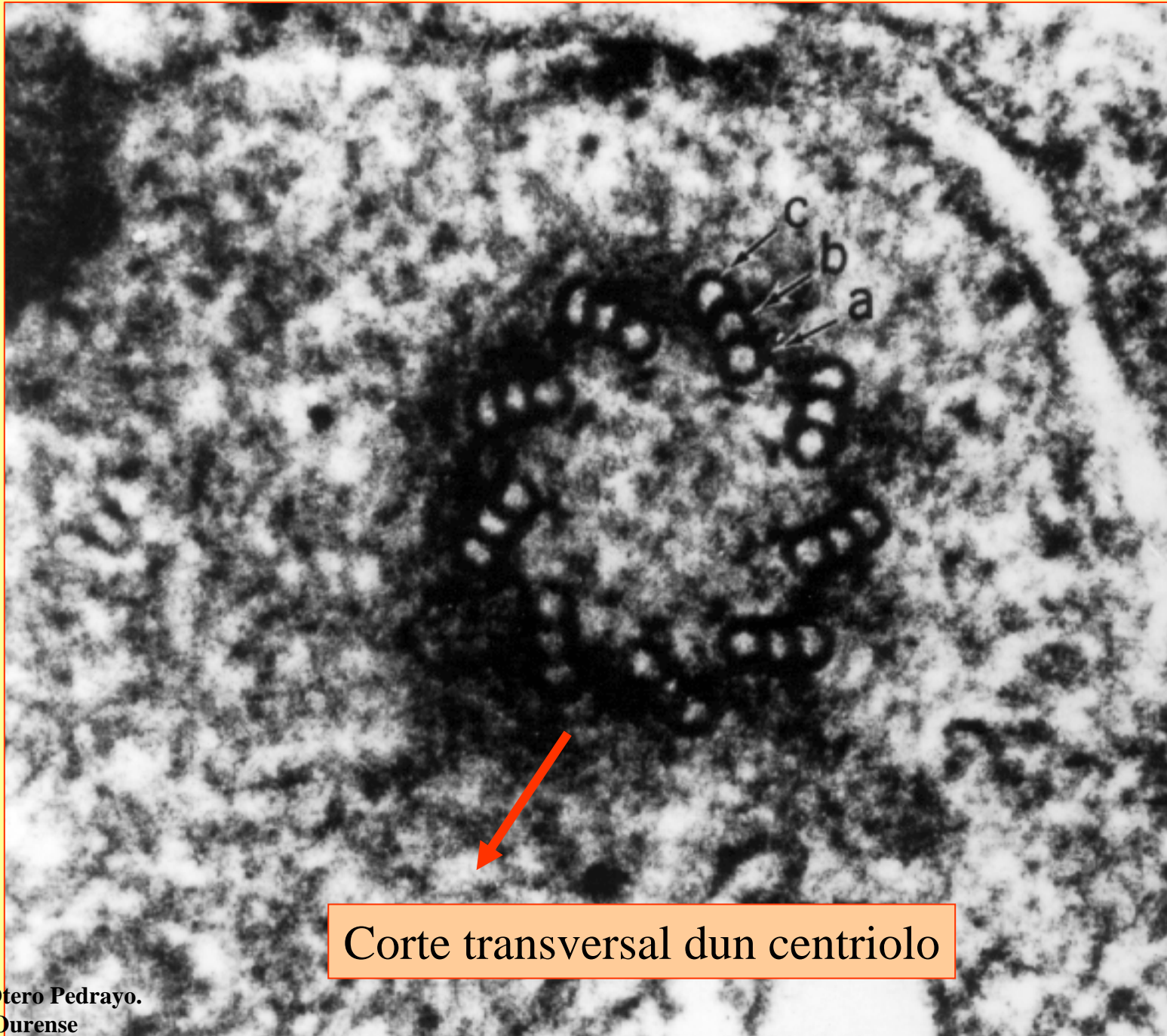
Cara trans



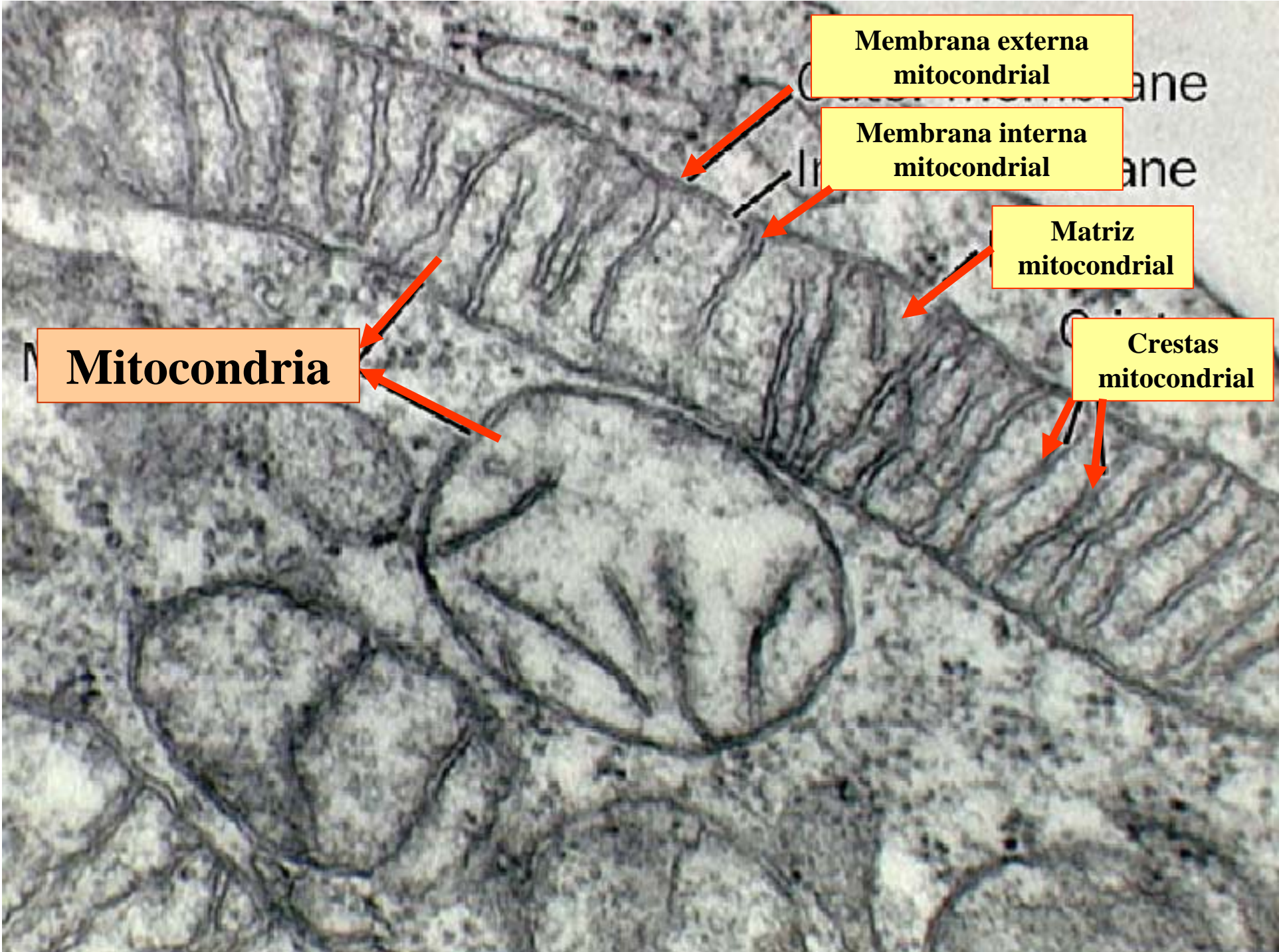
Aparato de Golgi







Corte transversal dun centriolo



**Membrana externa
mitocondrial**

**Membrana interna
mitocondrial**

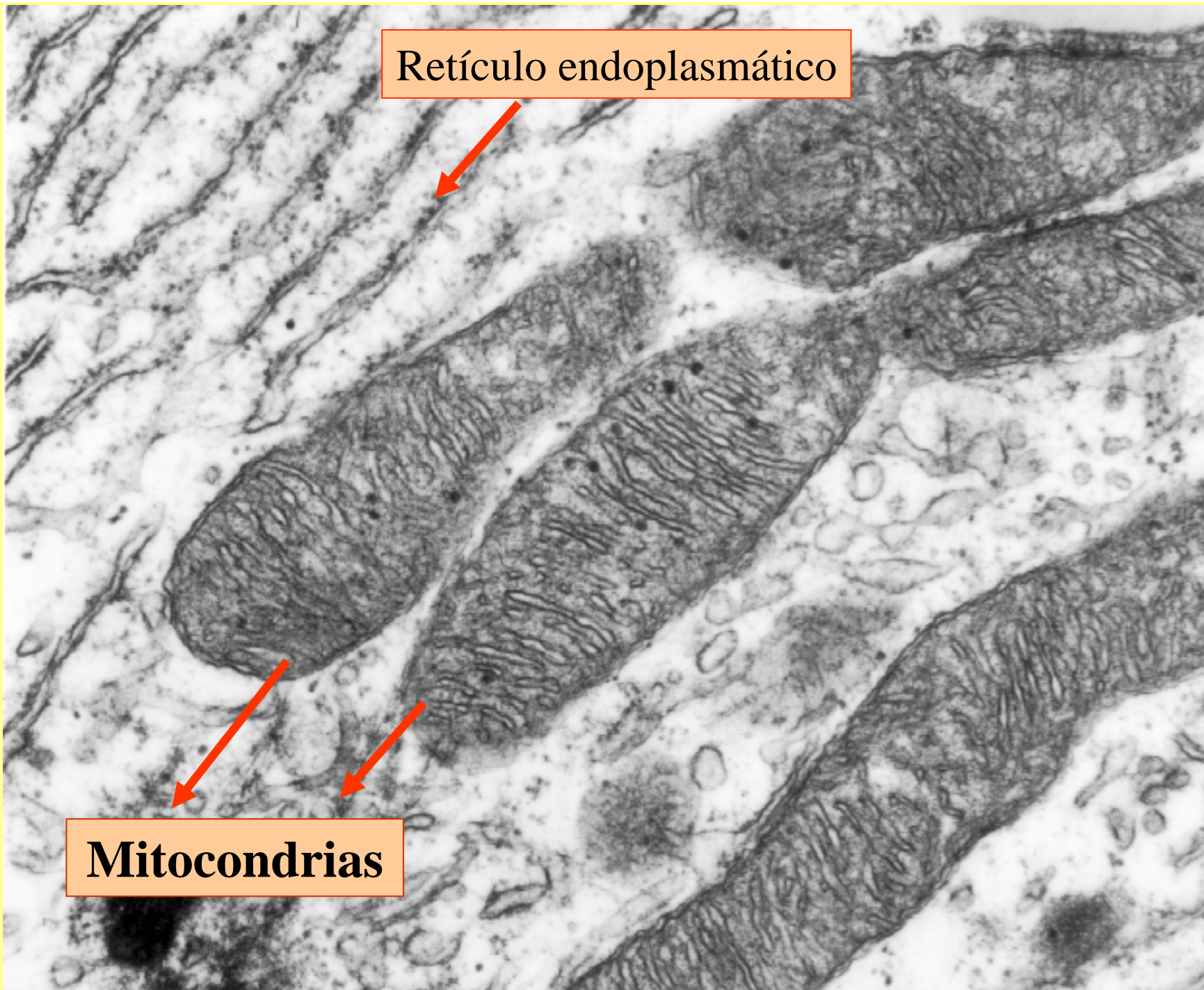
**Matriz
mitocondrial**

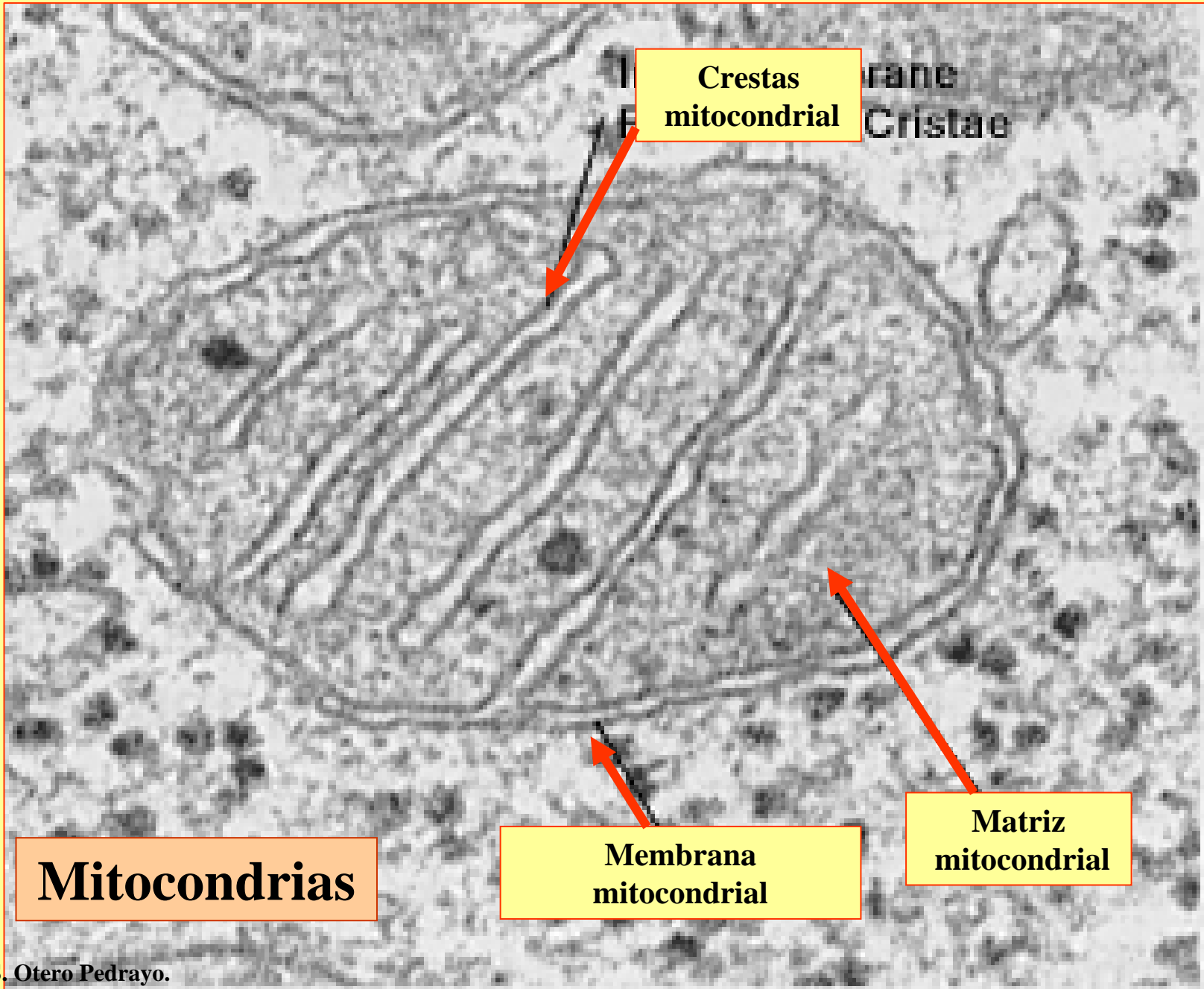
**Crestas
mitocondrial**

Mitochondria

Retículo endoplasmático

Mitocondrias





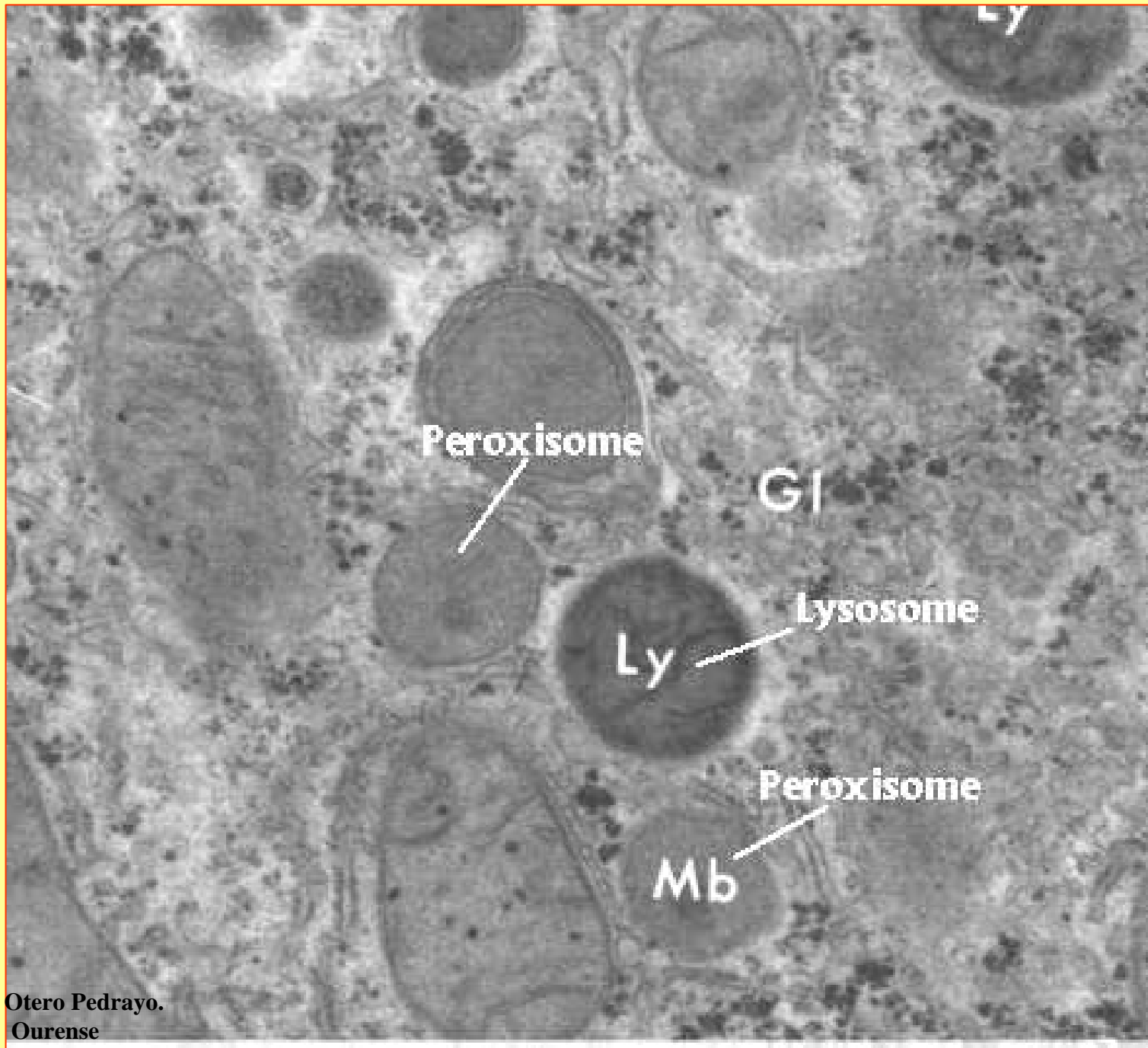
Mitocondrias

**Crestas
mitocondrial**

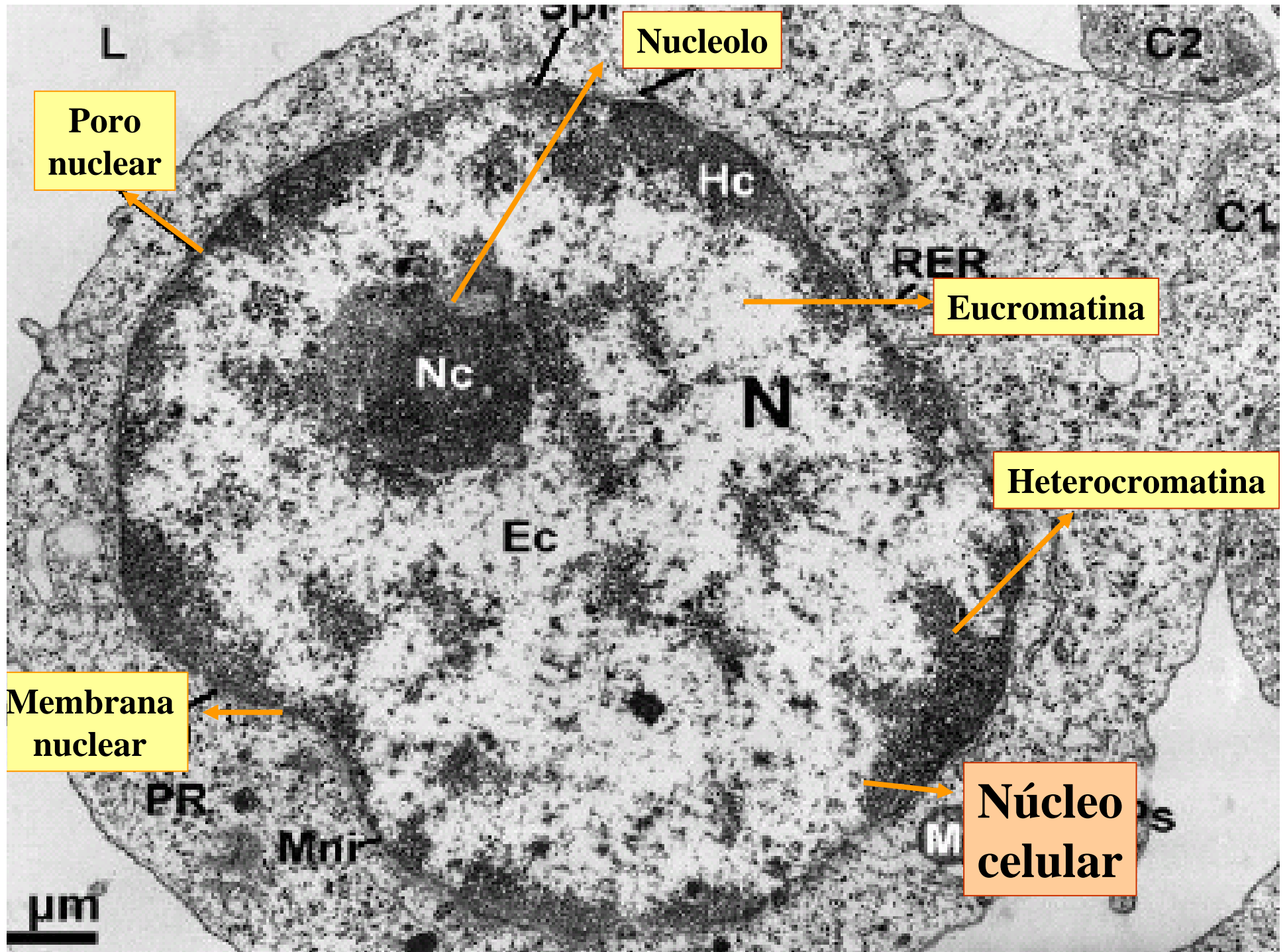
rane
Cristae

**Membrana
mitocondrial**

**Matriz
mitocondrial**



I.E.S. Otero Pedrayo.
Ourense



Nucleolo

Poro nuclear

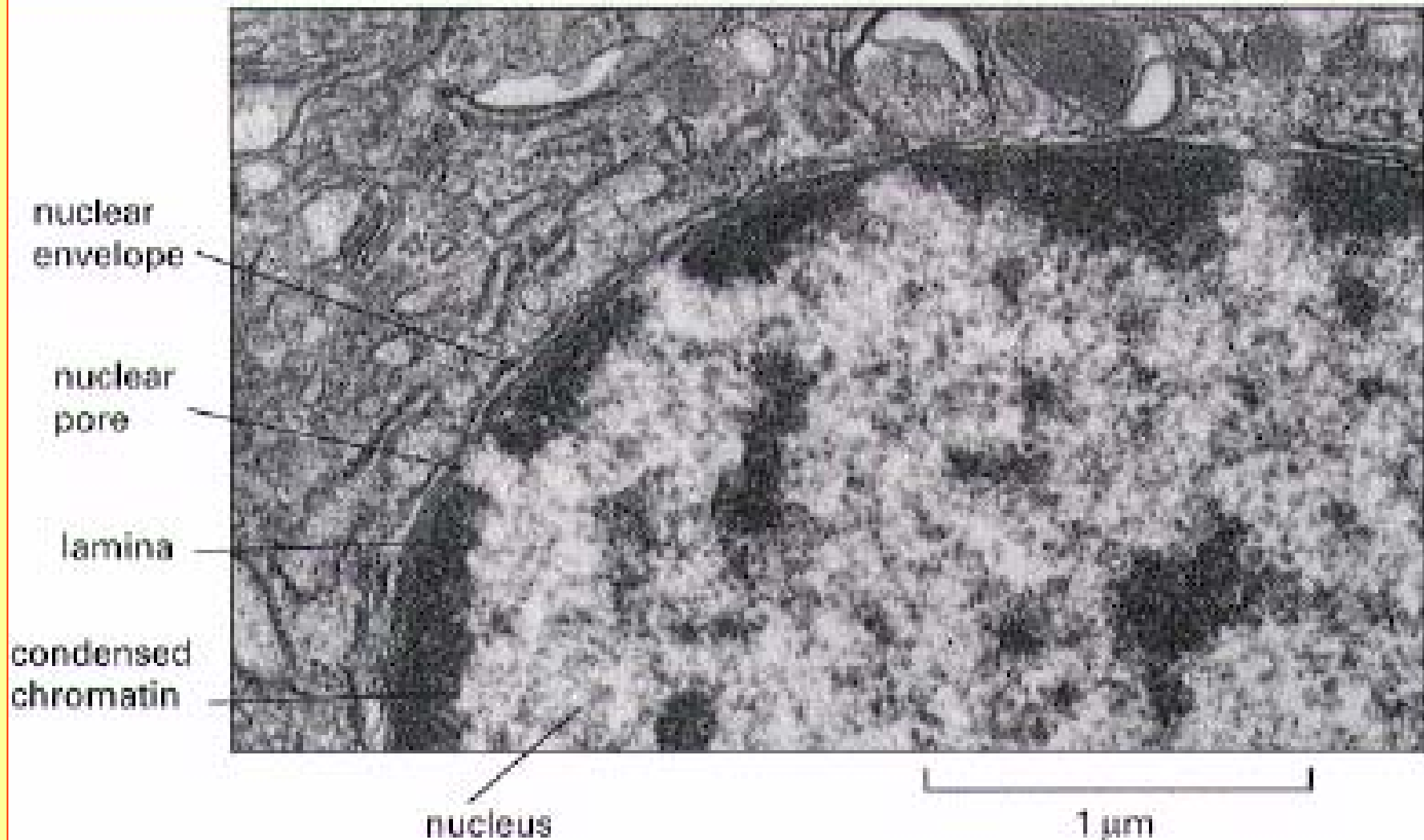
Eucromatina

Heterocromatina

Membrana nuclear

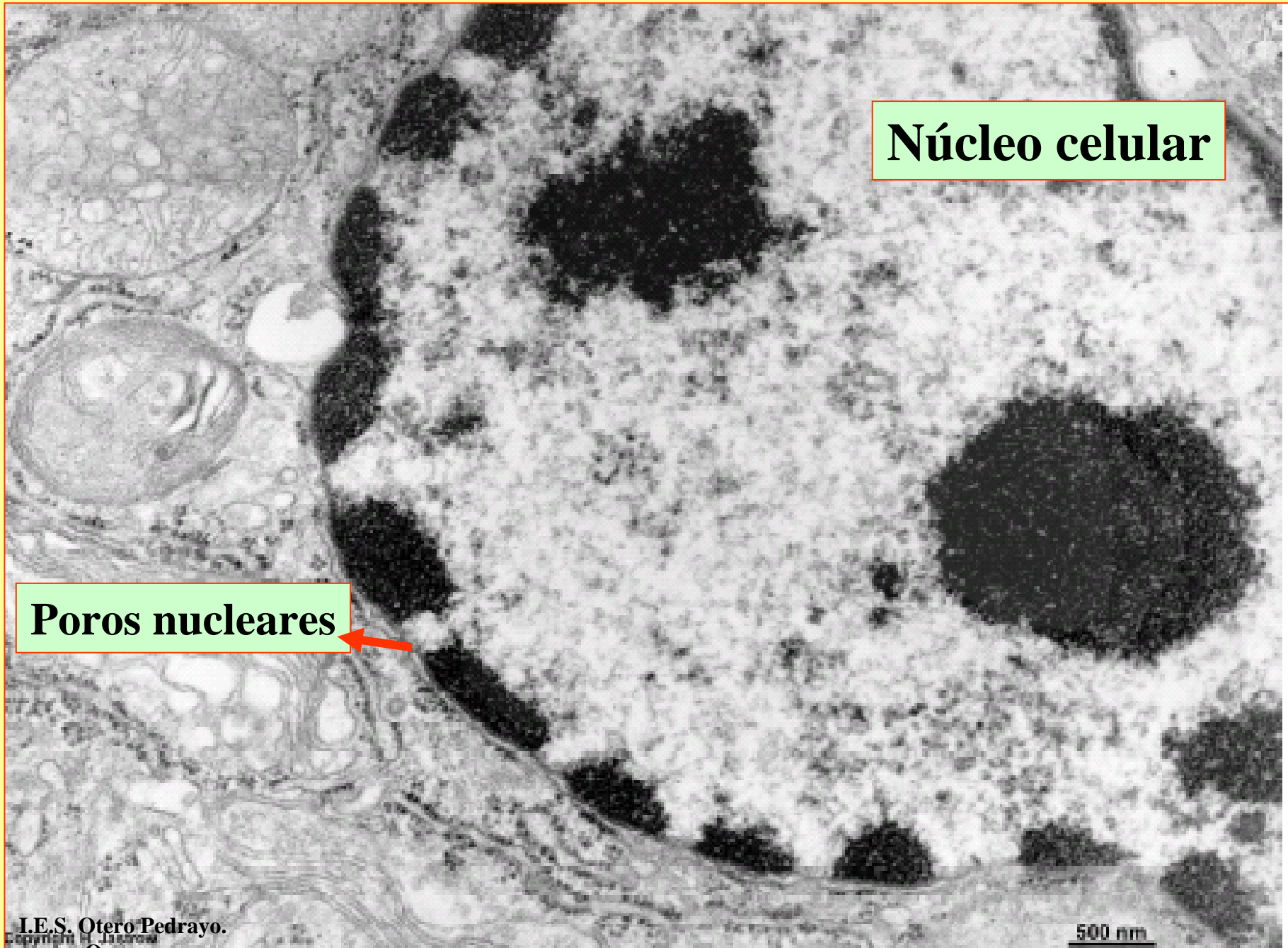
Núcleo celular

1 μm

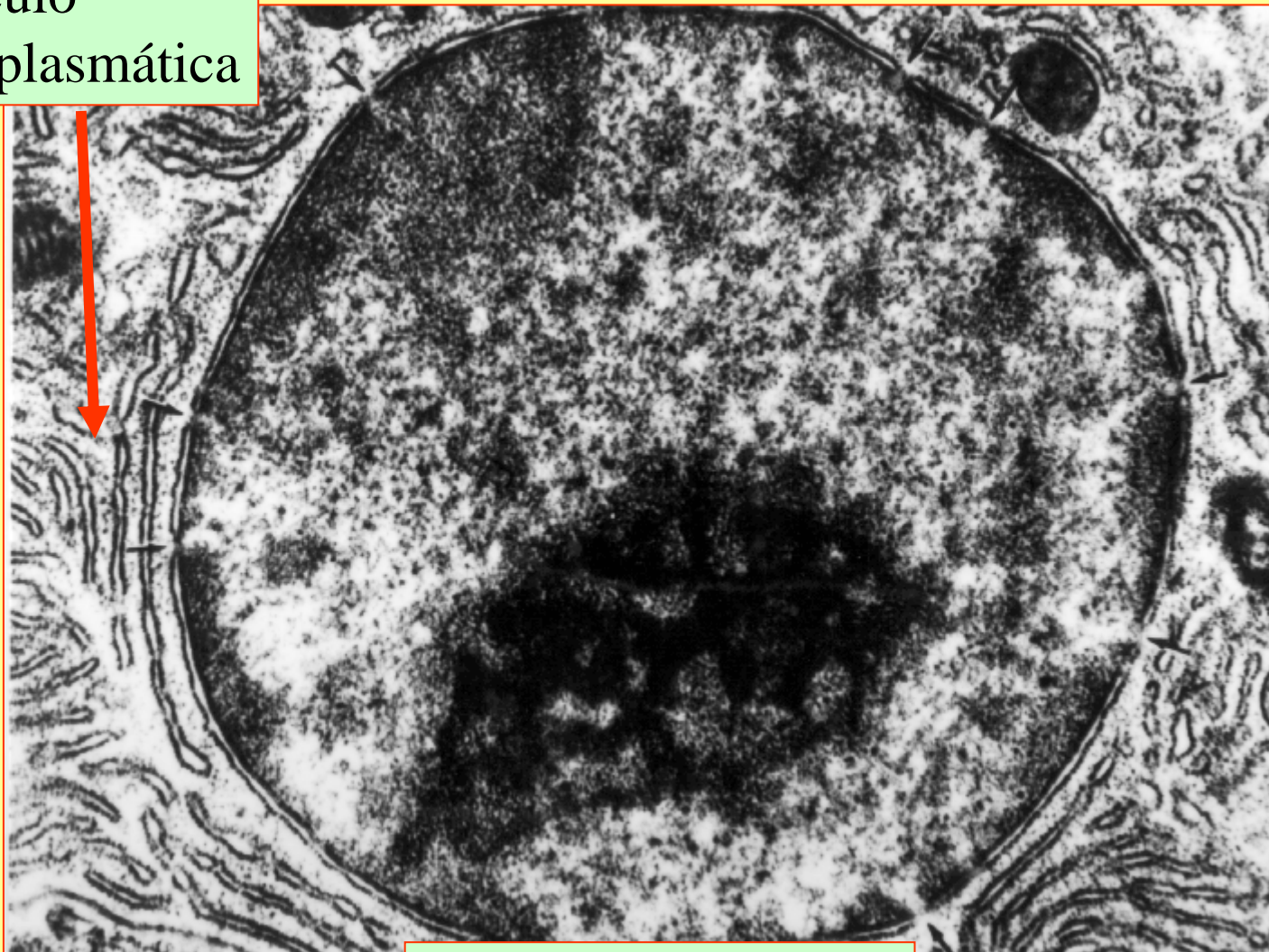


Núcleo celular

Poros nucleares

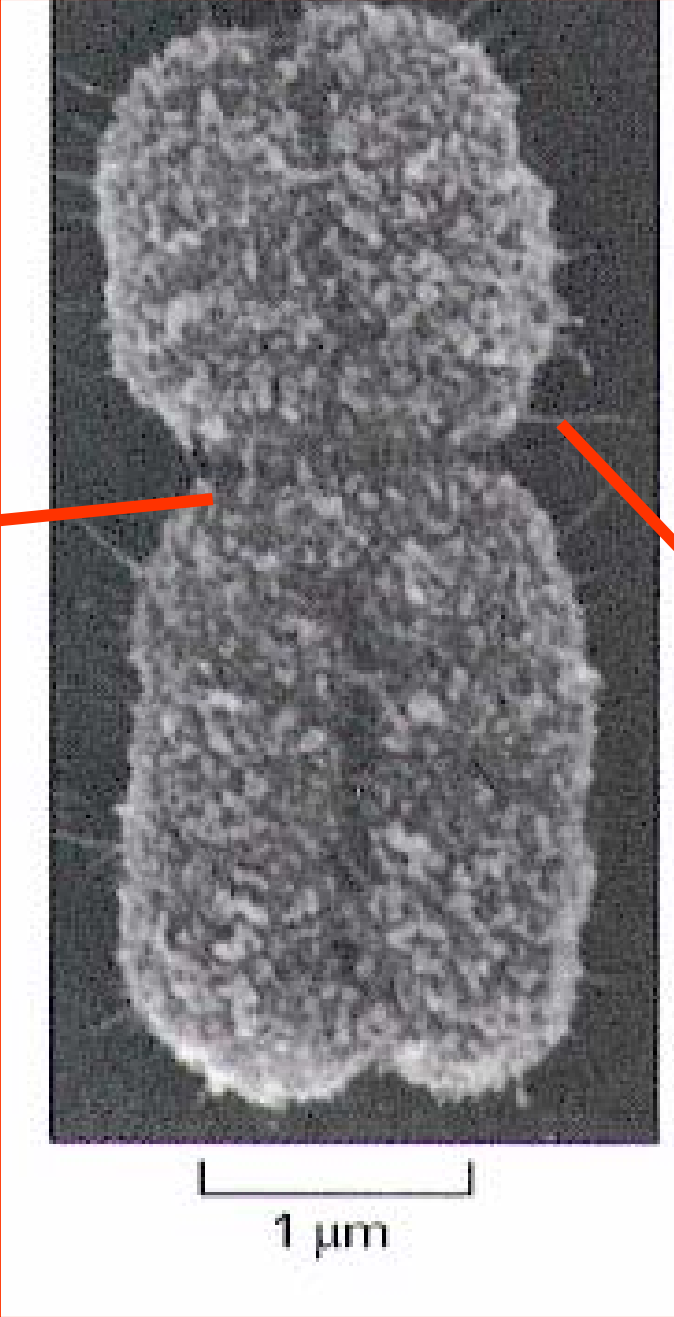


Retículo
endoplasmática



Núcleo celular

Centrómero



Cromosoma

Célula vegetal vista
con el microscopio
electrónico

10000X

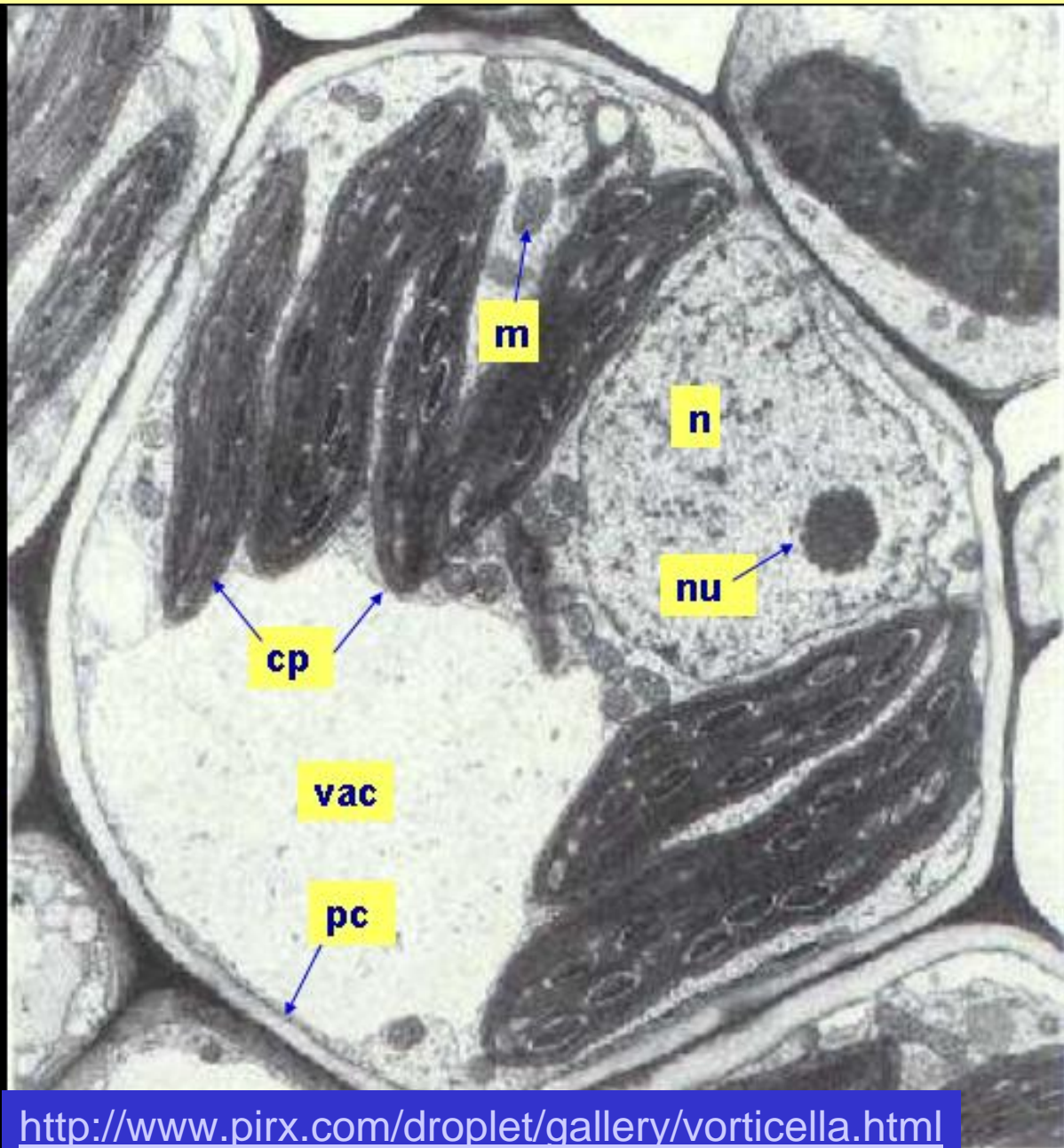
n = núcleo

nu = nucleolo

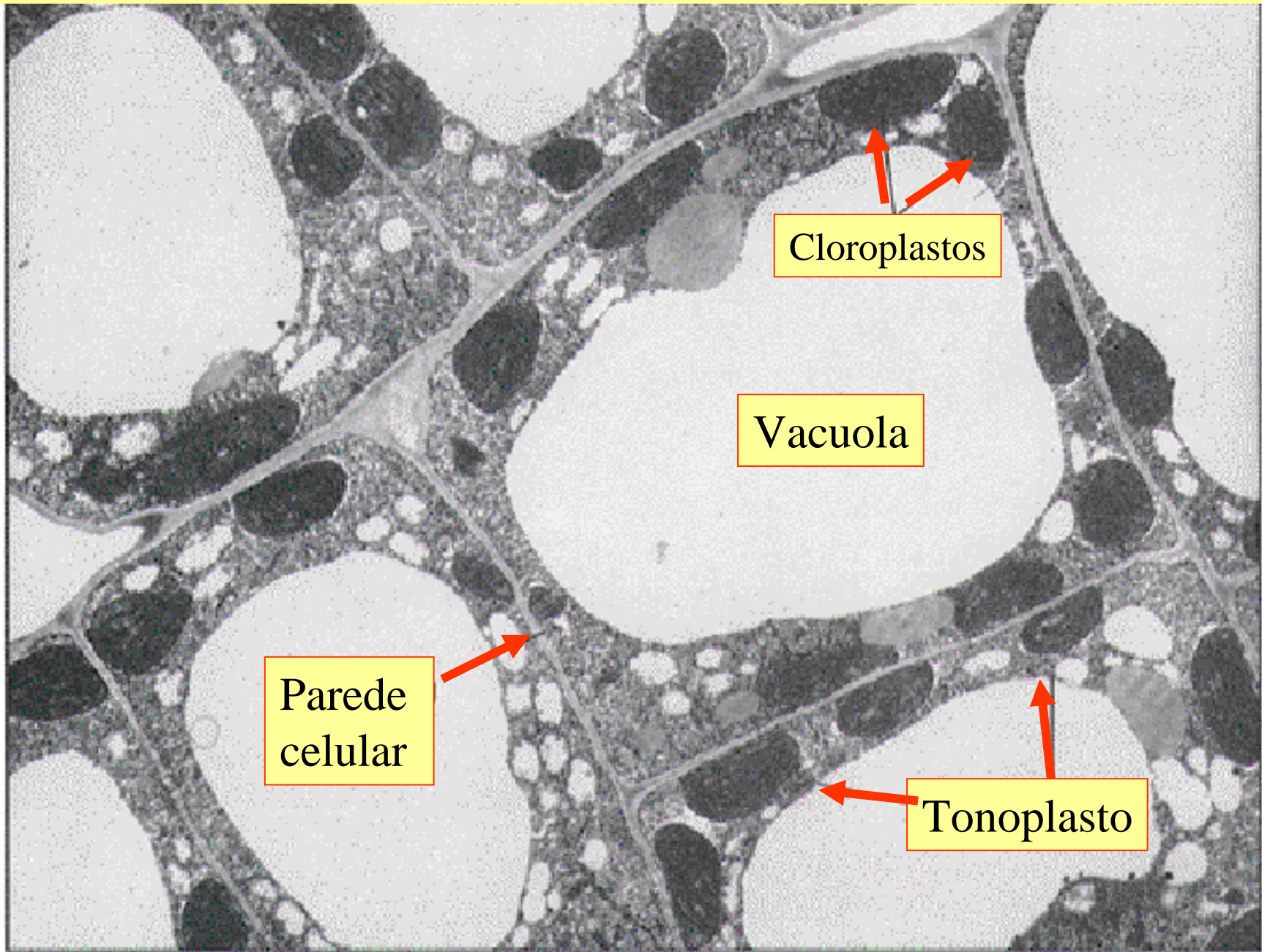
vac = vacuola

cp = cloroplasto

pc = pared celulósica



<http://www.pirx.com/droplet/gallery/vorticella.html>



Cloroplastos

Vacuola

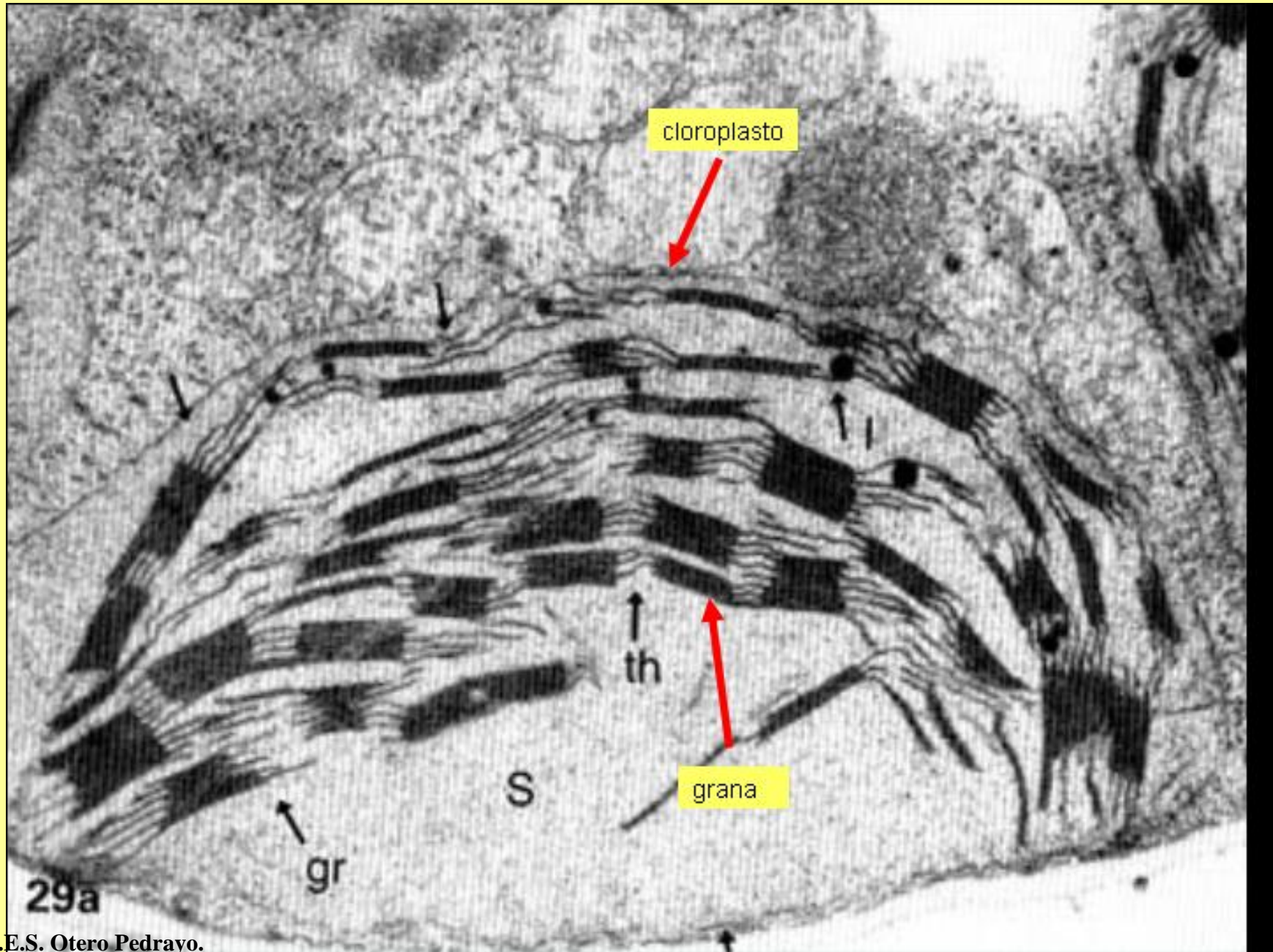
Parede celular

Tonoplasto

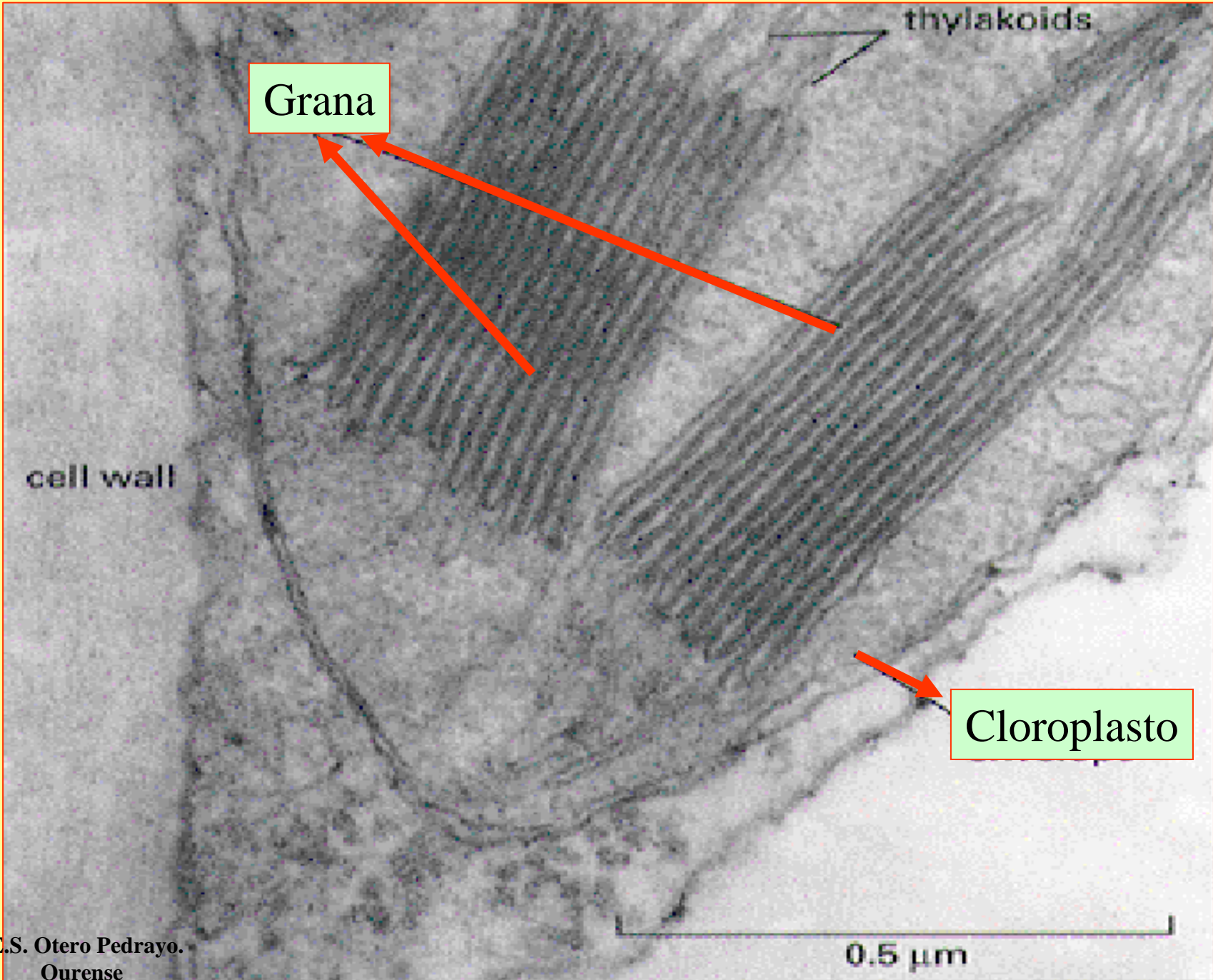
I.E.S. Otero Pedrayo.
Ourense

Células vexetais

10 μ m



I.E.S. Otero Pedrayo.
Ourense





*Departamento Bioloxía e Xeoloxía
I.E.S. Otero Pedrayo. Ourense.*